

MICHIGAN DEPARTMENT OF ENVIRONMENTAL QUALITY
SURFACE WATER QUALITY DIVISION
APRIL 2002

STAFF REPORT

CLEAN WATER ACT SECTION 303(d) LIST
MICHIGAN SUBMITTAL FOR YEAR 2002

I. INTRODUCTION

A. Purpose

The purpose of this report is to fulfill the requirements set forth in Section 303(d) of the federal Clean Water Act (CWA) and the Water Quality Planning and Management regulation at Title 40 of the Code of Federal Regulations (CFR), Part 130.

This report is submitted to the United States Environmental Protection Agency (USEPA) by the Michigan Department of Environmental Quality (MDEQ) for review and approval of Michigan's list of water quality-limited or threatened waters needing pollutant Total Maximum Daily Loads (TMDLs) established. It provides the state's supporting documentation required by 40 CFR, Section 130.7(b)(6) and rationale in fulfilling Section 303(d) requirements. Michigan is providing its submittal of Section 303(d) requirements as a separate document rather than including it in the state's biennial Section 305(b) report.

B. CWA Requirements

Under the Section 303(d) requirements of the CWA, states are required to:

1. Identify waters that will not attain applicable Water Quality Standards (WQS) with technology-based controls. This includes treatment technology, best available technology (BAT), and best management practices (BMPs) enforced by federal, state, or local laws or regulations.
2. Identify waters that are "threatened," which means those waters that presently attain WQS but are expected to not meet WQS by April 2004.
3. Establish a schedule for TMDLs so that TMDLs are completed in the next 10 years.

C. MDEQ's Watershed Approach

The MDEQ uses a rotating watershed cycle for surface water quality monitoring and National Pollutant Discharge Elimination System (NPDES) permit reissuance. Each of the 58 major watersheds in the state is scheduled for monitoring and discharge permit reissuance at least once every five years (Figure 1). This approach allows nonpoint source water quality-related issues and all the NPDES permits within a watershed to be addressed at the same time.

Monitoring used to enhance permit issuance reviews is conducted in the targeted watersheds two years prior to NPDES permit reissuance. This process facilitates the identification of waterbodies that need TMDLs and the compilation of appropriate information for their development.

II. METHODOLOGY

A. Section 303(d) References

Several references and guidance documents are involved in the Section 303(d) list development. These references include:

- Michigan Water Quality Report 2002 (Section 305(b) Report);
- CWA of 1987;
- Federal Register Part II, USEPA, 40 CFR, Parts 122, 123, and 130;
- USEPA Guidance for Water Quality-Based Decisions: The TMDL Process, April 1991;
- National Clarifying Guidance for 1998 State and Territory Section 303(d) Listing Decisions (August 27, 1997 Robert Wayland memo);
- New Policies for Establishing and Implementing TMDLs (August 8, 1997 Robert Perciasepe memo); and
- 2002 Integrated Water Quality Monitoring and Assessment Report Guidance (November 19, 2001 Robert Wayland memo).

B. Identification of Water Quality-Limited Waters

USEPA regulations (40 CFR, Section 130.7(b)) require that:

"(b)(1) Each state shall identify those water quality-limited segments still requiring TMDLs within its boundaries for which:

- (i) Technology-based effluent limitations required by Sections 301(b), 306, 307, or other sections of the CWA;
- (ii) More stringent effluent limitations (including prohibitions) required by either state or local authority preserved by Section 510 of the CWA, or federal authority (law, regulation, or treaty); and
- (iii) Other pollution control requirements (e.g., best management practices) required by local, state, or federal authority are not stringent enough to implement any WQS applicable to such waters."

These waterbodies are where the state needs to develop and implement either TMDLs or other suitable corrective actions to achieve WQS.

Michigan has reviewed its waterbody-specific information to identify those waterbodies that still require TMDLs under Section 303(d). Michigan's Section 303(d) list is compiled by evaluating the most current, available site-specific data using the following decision process:

1. The waterbody is not attaining WQS, and the waterbody will not attain WQS with the application of technology-based controls, BAT, or BMPs.
2. The waterbody is presently attaining WQS but is expected to not meet WQS by April 2004 (Threatened Waterbodies).

The decision process for nonattainment and threatened waterbodies is outlined in Attachment 1. This decision process is consistent with that previously used during the development of the 1998 and 2000 Section 303(d) lists.

C. Data Used to Develop Section 303(d) List

The source of identified waterbodies contained in the Section 303(d) list is the WQS Nonattainment List developed for the state's Section 305(b) biennial report. Water quality attainment assessments in the Section 305(b) report are based on a combination of chemical (water, sediment, and fish tissue) and biological data (macroinvertebrate and fish). All monitoring data, collected as part of MDEQ monitoring programs, are entered into either the Storage and Retrieval (STORET) database and/or into specific state-developed database management systems.

Data collected from credible sources other than MDEQ monitoring programs are also evaluated as part of the Section 305(b) development process. However, the use of data from other sources is often limited. Data are used if they meet appropriate quality assurance/control requirements. Other information sources include:

- USEPA;
- United States Geological Survey;
- United States Fish and Wildlife Service;
- United States Department of Agriculture;
- United States Army Corps of Engineers;
- State Universities;
- Michigan Department of Agriculture;
- Michigan's 2001 Fish Consumption Advisory;
- County Community Health Departments; and
- National Oceanic and Atmospheric Administration.

III. MICHIGAN'S SECTION 303(d) LIST

After applying the methodology provided in Section II of this report, the Michigan Section 303(d) list for 2002 was developed (Attachment 2). The Section 303(d) list contains the following information from Michigan's Waterbody System database as required by USEPA guidance:

- Waterbody I.D. Number;
- Reach File 3 Indexing Number;
- Stream/Lake Name;
- Location Description;
- Size (stream miles, lake acres);
- Problem Summary; and
- Scheduled TMDL completion year.

The information and data used to compile the list was primarily from Michigan's Environmental Assessment Program. To restore and expand these monitoring activities, the MDEQ developed a strategy entitled, "A Strategic Environmental Quality Monitoring Program for Michigan's Surface Waters" in January 1997. Preliminary implementation through partial funding began immediately, with implementation accelerating rapidly with

the passage of the Clean Michigan Initiative (CMI) in 1998. The CMI included the Clean Water Fund, which prescribed monitoring of surface waters through the 1997 strategy as a priority. In addition, laboratory methods are becoming readily available to measure some pollutants at levels needed to determine if WQS are achieved. This is particularly true for mercury and polychlorinated biphenyls (PCBs). As a result of this enhanced monitoring and improved analytical capability, Michigan now has a much greater knowledge of surface water quality, including data from an aggressive five-year rotating watershed monitoring program that was completed for the first time in 2001.

The Great Lakes and Michigan's inland waters have substantially improved since the early 1970s when the NPDES permit process for point source discharges was implemented. Michigan has been very diligent and effective in issuing NPDES permits to point source dischargers that result in WQS compliance and designated use protection and support. Over 300 water quality-based effluent limits are developed for discharge permits issued each year. Each water quality-based effluent limit incorporates many of the same elements as a TMDL. The permit process serves to keep many additional waterbodies off the Section 303(d) list.

Michigan has also been aggressively pursuing the control of nonpoint sources (NPS) of pollutants. These programs have dramatically increased since the passage of the CMI in 1998. As part of this initiative, specific funds have been allocated to implement corrective actions to address NPS pollutant loadings.

The number of non-Bioaccumulative Chemicals of Concern TMDLs on the list has decreased from 194 in 2000 to 179 in 2002 list (Figure 2) as a result of corrective activities in both the NPS Program and the NPDES Permit Program. The NPS activities resulted in delisting ten waterbodies, primarily due to actions that addressed sedimentation and animal access. Seven waterbodies were delisted directly due to actions taken to correct point source discharges. These activities have allowed the waterbodies to meet water quality standards, as shown by follow-up monitoring, and be delisted (Attachment 4). In addition, seven waterbodies on the 2000 list due to contaminated sediments have been delisted because the contaminated sediments have been remediated, or are under order or contract to be remediated (South Branch Black River, Manistique River, Pine River, Rouge River (Newburgh Lake), Saginaw River, Unnamed Tributary to Wolf Creek, and Willow Run Creek).

IV. TMDL DEVELOPMENT AND PRIORITIZATION

Waterbodies are prioritized for TMDL development considering the following factors:

1. Michigan's five-year rotating watershed cycle approach.
2. USEPA's direction to have all TMDLs developed in 10 years.
3. Available resources to complete TMDLs.
4. Data availability.
5. Complexity of problem, including severity of pollution.
6. Ability of water program to address the TMDL issue.
7. Presence of active projects, such as site remediation under Part 201, Environmental Remediation, of the Natural Resources and Environmental Protection Act, 1994 PA 451, as amended (Act 451).
8. Consideration of the "threatened" status for a waterbody.
9. Designated uses of the waters.

A schedule for TMDL development for the next ten years was derived based on the above factors and is included as Attachment 3.

The number of TMDLs to be developed, by year, is shown below and in Figure 3:

2002: 11	2008: 24
2003: 15	2009: 39
2004: 22	2010: 57
2005: 21	2011: 158
2006: 30	2012: 9
2007: 24	Total = 410

Most TMDLs are scheduled following Michigan's five-year rotating watershed assessment approach. There were some exceptions for the following reasons:

- The USEPA has offered to take the lead on developing the mercury TMDLs and requested that these TMDLs be scheduled at the end of the process due to the complexity of the problem. A total of 154 mercury TMDLs are scheduled in 2011.
- The 23 waterbodies that are affected by Combined Sewer Overflows (CSOs) are scheduled for TMDL development based on the scheduled implementation of the approved long-term CSO Control Programs for these facilities.
- TMDLs for problematic organic chemicals with primarily atmospheric sources (PCB, chlordane, DDT, and dioxin), are generally scheduled in later years (starting in 2008) to allow the collection of additional information based on low level analysis and source determination.

V. Status of 2000-2002 TMDL Development

The following TMDL development actions were taken during 2000-2002.

- Five TMDLs were submitted to the USEPA for approval, as follows:
 - 2000 TMDLs: Strawberry Lake – Phosphorus
Lake Allegan – Phosphorus
 - 2001 TMDLs: Huron River (Geddes Pond) - *Escherichia coli* (*E. coli*)
Coldwater River - Biota
 - 2002 TMDL: Crapaud Creek - *E. coli*
- The USEPA has approved the following TMDLs during 2000-2002:
 - Strawberry Lake, Lake Allegan, Ford/Belleville Lakes, Huron River (Geddes Pond), Coldwater River, and Crapaud Creek.
- Two pathogen-related TMDLs (Galien River and Lenawee County Drain 70) and one biota TMDL (Carrier Creek) are proceeding through public comment.
- Seven contaminated sediment TMDLs have been delisted because the contaminated sediments have been remediated, or are under order or contract to be remediated (South Branch Black River, Manistique River, Pine River, Rouge River (Newburgh Lake), Saginaw River, Unnamed Tributary to Wolf Creek, and Willow Run Creek).

Attachment 4 provides a list of waterbodies from the 2000 Section 303(d) listing where: the problem was remediated by specific actions restoring WQS; a TMDL was developed and submitted to the USEPA for approval; the TMDL was rescheduled because of a permitting action; the waterbody was reassessed and found to meet WQS; or a change in classification from nonattaining to highly modified waterbodies was made. Highly modified waterbodies are typically those that are impaired due to channelization or recent maintenance dredging.

Attachment 5 provides a list of waterbodies for which TMDLs have been developed and submitted to the USEPA since 1996.

Report by: William Creal and John Wuycheck
Water Quality Appraisal Unit South
Great Lakes and Environmental Assessment Section
Surface Water Quality Division

Five-Year Basin Cycle

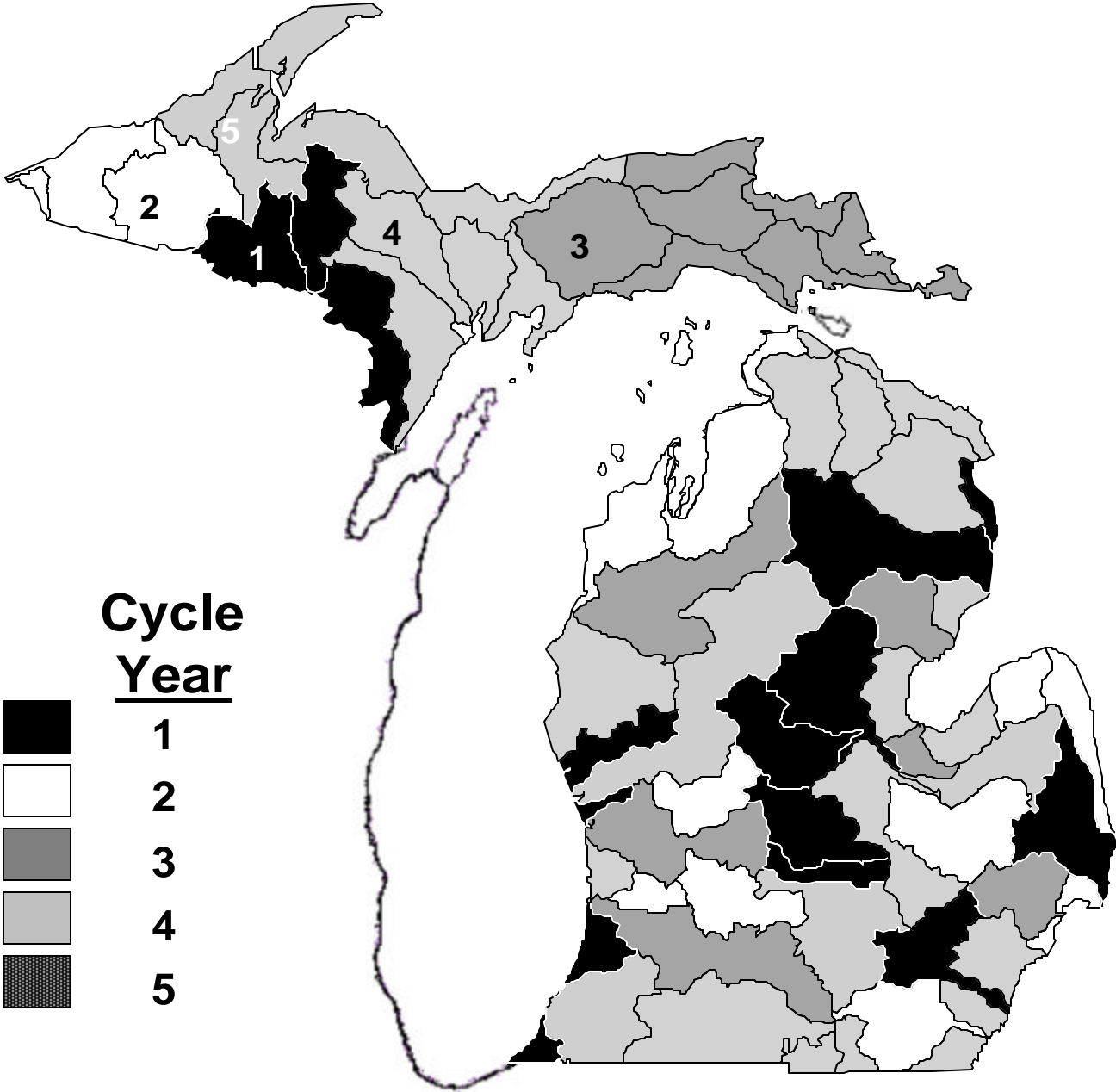


Figure 1 Five-Year Watershed Assessment Cycle

Figure 2. Comparison of Non-BCC TMDLs between 2000 and 2002 for Michigan

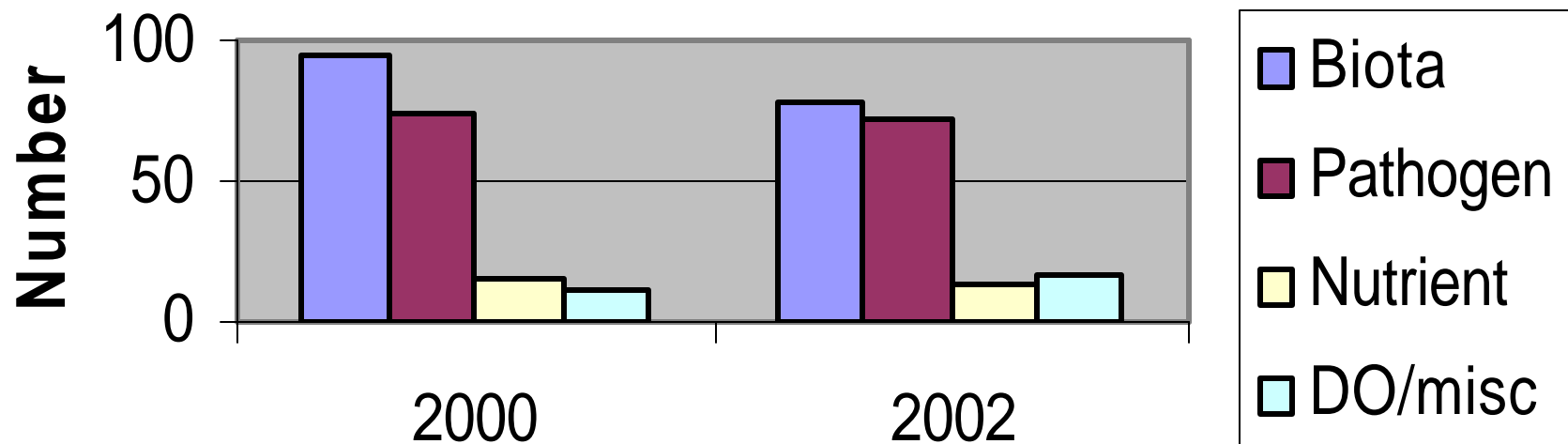
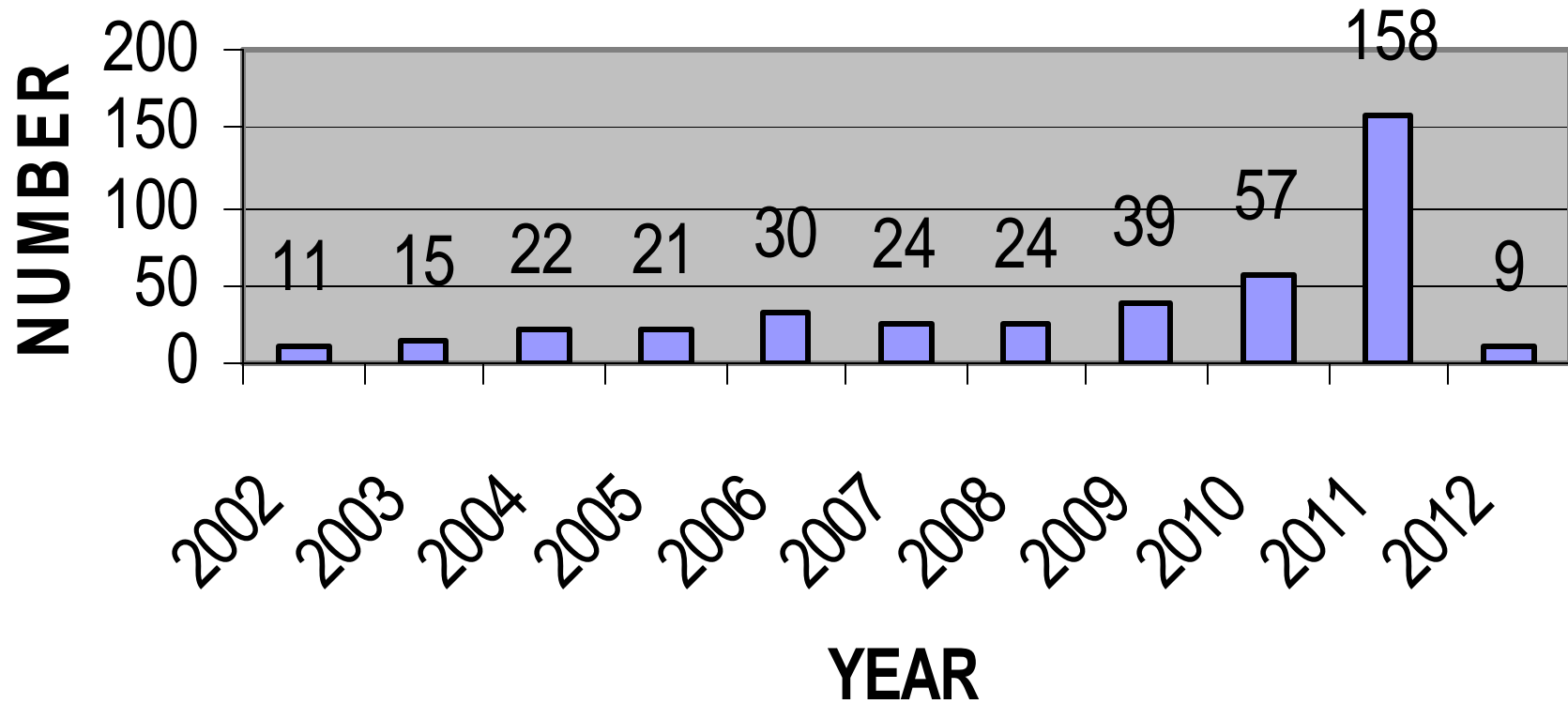


Figure 3. TMDLs by Year Scheduled



ATTACHMENT 1

Nonattainment and Threatened List Criteria

This attachment describes the criteria used by Michigan to determine the attainment status of the waterbodies monitored over the last five years.

Nonattainment Status Criteria

The following decision criteria were used in evaluating designated use nonattainment for each waterbody:

1. Water quality standards (WQS) are the minimally acceptable water quality conditions.
2. Ambient chemistry and microorganisms exceedances of the WQS are assessed and determined on a case-by-case basis. Nonattainment is determined by assessing the severity and frequencies of the exceedances.
3. When using biological community (fish and/or macroinvertebrate) assessment results, only the "poor" rating is used to place a waterbody on the Nonattainment List.
4. Waterbodies with combined sewer overflows or untreated sewage discharges are placed on the Nonattainment List.
5. Waterbodies with Fish Consumption Advisories are placed on the Nonattainment List.
6. Inland lakes and impoundments with fish tissue levels averaging greater than 0.3 mg/kg (based on at least five fish of a given species) for mercury are placed on the Nonattainment List as "Mercury Lakes."

Threatened Status Criteria

Threatened waterbodies are those that presently meet WQS but are expected to not meet WQS by April 2004. A waterbody is considered fully supporting but threatened for a particular designated use/compound when the use/compound may not meet WQS in April 2004 unless pollution prevention or control action is taken because of anticipated sources or adverse pollution trends.

ATTACHMENT 2

**MICHIGAN WATERBODY SYSTEM
Section 303(d) Year 2002 TMDL List**

ADVENTURE CREEK			WBID# 221209G
County: ONTONAGON	HUC: 4020102	Size:	4 M
Location: Red Shed Road crossing d/s.			
Problem: Macroinvertebrate community rated poor.			
TMDL Year(s): 2008		RF3RchID:	4020102 28
ALBROW CREEK			WBID# 082816J
County: JACKSON	HUC: 4050004	Size:	1 M
Location: From Rives-Eaton Road u/s to Rives Junction Rd.			
Problem: Untreated sewage discharge, pathogens (Rule 100).			
TMDL Year(s): 2007		RF3RchID:	40500041008
ALDER CREEK			WBID# 082821K
County: CLINTON	HUC: 4050005	Size:	3 M
Location: Station located 250 ft. u/s of Woodworth Road crossing. Ovid Twp.			
Problem: Fish community rated poor; Nutrient enrichment, nuisance algal growths.			
TMDL Year(s): 2009		RF3RchID:	4050005 13
ALMA IMPOUNDMENT (PINE RIVER)			WBID# 210421G
County: GRATIOT	HUC: 4080202	Size:	150 A
Location: Impoundment of the Pine River in the vicinity of Alma.			
Problem: FCA-PCBs; Mercury Lake.			
TMDL Year(s): 2010 2011		RF3RchID:	
AMOS/PALMER DRAIN, N. BR. AND STONY CREEK#			WBID# 061201C
County: MONROE	HUC: 4100001	Size:	23 M
Location: Amos-Palmer Drain (2 miles d/s Palmer Rd.) d/s to Stony Creek, then, d/s to Lake Erie.			
Problem: WQS exceedance for TDS and hydrogen sulfide; Fish and macroinvertebrate communities rated poor.			
TMDL Year(s): 2004		RF3RchID:	
ARBUTUS LAKE			WBID# 081601L
County: GRAND TRAVERSE	HUC: 4060105	Size:	395 A
Location: SE of Traverse City.			
Problem: Mercury Lake.			
TMDL Year(s): 2011		RF3RchID:	
AU SABLE RIVER			WBID# 210801A
County: IOSCO	HUC: 4070007	Size:	9 M
Location: Lake Huron u/s to Foote Dam.			
Problem: FCA-PCBs, mercury.			
TMDL Year(s): 2010 2011		RF3RchID:	4070007 12
AU TRAIN LAKE			WBID# 220402Y
County: ALGER	HUC: 4020201	Size:	830 A
Location: W. of Munising.			
Problem: Mercury Lake.			
TMDL Year(s): 2011		RF3RchID:	

AUSTIN LAKE WBID# **083208C**
County: KALAMAZOO HUC: 4050003 Size: 1090 A
Location: Vicinity of Portage.
Problem: **Mercury Lake.**
TMDL Year(s): 2011 RF3RchID:

BARTON LAKE WBID# **083210G**
County: KALAMAZOO HUC: 4050001 Size: 347 A
Location: SW of Vicksburg.
Problem: **FCA-PCBs; Mercury Lake.**
TMDL Year(s): 2010 2011 RF3RchID:

BARTON POND (HURON RIVER IMP.) WBID# **061203M**
County: WASHTENAW HUC: 4090005 Size: 210 A
Location: Impoundment of Huron River in vicinity of Barton Hills (suburb of Ann Arbor). From dam u/s to Conrail RR bridge crossing.
Problem: **FCA-PCBs.**
TMDL Year(s): 2010 RF3RchID:

BASS LAKE WBID# **081601M**
County: GRAND TRAVERSE HUC: 4060105 Size: 343 A
Location: SW of Traverse City.
Problem: **Mercury Lake.**
TMDL Year(s): 2011 RF3RchID:

BASS RIVER WBID# **082801H**
County: OTTAWA HUC: 4050006 Size: 33 M
Location: Grand River confluence u/s to 92nd Street crossing of Bass and Little Bass rivers.
Problem: **Pathogens (Rule 100); Fish and macroinvertebrate communities rated poor.**
TMDL Year(s): 2006 RF3RchID: 4050006 4

BATTLE CREEK RIVER WBID# **083006F**
County: CALHOUN HUC: 4050003 Size: 10 M
Location: Kalamazoo River confluence u/s.
Problem: **FCA-PCBs.**
TMDL Year(s): 2010 RF3RchID: 4050003 32 0.16

BEAN CREEK WBID# **060102A**
County: LENAWEЕ HUC: 4100006 Size: 2 M
Location: Vicinity of Hudson.
Problem: **Untreated sewage discharge, pathogens (Rule 100).**
TMDL Year(s): 2002 RF3RchID: 4100006 7

BEAR CREEK WBID# **061402B**
County: MACOMB HUC: 4090003 Size: 3 M
Location: Red Run Drain confluence u/s to Mound Rd. in the vicinity of Warren.
Problem: **CSO, pathogens (Rule 100).**
TMDL Year(s): 2006 RF3RchID: 4090003 525 0.00

BEAR LAKE WBID# **082701A**
County: MUSKEGON HUC: 4060102 Size: 415 A
Location: Tributary to Muskegon Lake located north of Muskegon Lake, Laketon
Problem: **FCA-PCBs, mercury; Nutrient enrichment, nuisance algal growths.**
TMDL Year(s): 2009 2011 2008 RF3RchID:

BEATONS LAKE WBID# **221205F**
County: GOGEBIC HUC: 4020102 Size: 330 A
Location: Ottawa National Forest NE of Stickley.
Problem: **Mercury Lake.**
TMDL Year(s): 2011 RF3RchID:

BEAUFORT LAKE WBID# **080308E**
County: BARAGA HUC: 4030107 Size: 462 A
Location: Vicinity of Three Lakes.
Problem: **Mercury Lake.**
TMDL Year(s): 2011 RF3RchID:

BEAVER LAKE WBID# **211001B**
County: ALPENA HUC: 4070006 Size: 665 A
Location: SE of Fletcher Pond and SW of Alpena.
Problem: **Mercury Lake.**
TMDL Year(s): 2011 RF3RchID:

BELLE RIVER AND N. BR. BELLE RIVER WBID# **061501G**
County: LAPEER/ST. CLAIR HUC: 4090001 Size: 11 M
Location: Riley Center Rd. u/s to Berville Rd. and Bowman Rd. u/s to Imlay City
Problem: **WQS exceedances for TDS and D.O.; Macroinvertebrate community rated poor.**
TMDL Year(s): 2004 RF3RchID: 4090001 16

BERRY DRAIN WBID# **061506A**
County: SANILAC HUC: 4090001 Size: 4 M
Location: Stontenberg Road, one-half mile south of M-46 d/s to the Berkshire Road
Problem: **Macroinvertebrate community rated poor.**
TMDL Year(s): 2004 RF3RchID: 4090001 000

BIG BLUE LAKE WBID# **082301P**
County: MUSKEGON HUC: 4060101 Size: 330 A
Location: N. of Lakewood.
Problem: **Mercury Lake.**
TMDL Year(s): 2011 RF3RchID:

BILLS LAKE WBID# **082804N**
County: NEWAYGO HUC: 4050006 Size: 204 A
Location: S. of Croton.
Problem: **Mercury Lake.**
TMDL Year(s): 2011 RF3RchID:

BISHOP CREEK WBID# **061304O**
County: WAYNE HUC: 4090004 Size: 4 M
Location: Middle Br. River Rouge confluence u/s (including Ingersoll Creek).
Problem: **Macroinvertebrate community rated poor.**
TMDL Year(s): 2007 RF3RchID: 4090004 242 0.00

BISHOP LAKE WBID# **061206N**
County: LIVINGSTON HUC: 4090005 Size: 119 A
Location: Brighton State Recreation Area.
Problem: **Mercury Lake.**
TMDL Year(s): 2011 RF3RchID:

BLACK CREEK WBID# **083102C**
County: ALLEGAN HUC: 4050003 Size: 0.75 M
Location: Rabbit River confluence u/s to about 0.25 miles d/s of 140th Avenue.
Problem: **Macroinvertebrate community rated poor; Nutrient enrichment, nuisance plant growths; WQS exceedance for TDS.**
TMDL Year(s): 2004 RF3RchID: 40500031015

BLACK CREEK WBID# **082701J**
County: MUSKEGON HUC: 4060101 Size: 13 M
Location: Trib. to Mona Lake.
Problem: **FCA-PCBs; Fish community rated poor.**
TMDL Year(s): 2010 2003 RF3RchID: 4060101 14

BLACK CREEK WBID# **061101S**
County: LENAWEЕ HUC: 4100002 Size: 27 M
Location: River Raisin confluence u/s to Lake Hudson outlet.
Problem: **FCA-PCBs.**
TMDL Year(s): 2010 RF3RchID: 4100002

BLACK CREEK WBID# **061103G**
County: LENAWEЕ HUC: 4100002 Size: 3 M
Location: In the vicinity north of Weston, Fairfield Twp. T8S, R3E, Sec. 17-19.
Problem: **Fish community rated poor.**
TMDL Year(s): 2005 RF3RchID: 4100002

BLACK RIVER WBID# **061504A**
County: ST. CLAIR HUC: 4090001 Size: 1.5 M
Location: St. Clair River confluence u/s to I-94; vicinity of Port Huron.
Problem: **CSO, pathogens (Rule 100).**
TMDL Year(s): 2009 RF3RchID: 4090001 000

BLACK RIVER DRAIN, N. BR. WBID# **083102J**
County: ALLEGAN HUC: 4050002 Size: 12 M
Location: 111th Street u/s into Allegan State Game Area to 49th Street; 2.5 miles east of Bakersville.
Problem: **Nutrient enrichment, nuisance plant growths.**
TMDL Year(s): 2006 RF3RchID: 4050002 10

BLAKELY DRAIN / MARSH CREEK WBID# **061301B**
County: WAYNE HUC: 4090004 Size: 14 M
Location: Brownstown Creek confluence u/s (including Hale Creek and excluding Blakely Drain u/s of Hale Creek confluence).
Problem: **Macroinvertebrate community rated poor.**
TMDL Year(s): 2007 RF3RchID: 4090004 134 0.00

BLUFF CREEK/ROSELAWN CREEK WBID# **221202A**
County: ONTONAGON HUC: 4020102 Size: 13 M
Location: From the Bluff Creek confluence with the Sucker River u/s to Roselawn Creek confluence u/s to Bond Falls Flowage Basin dam flume.
Problem: **Fish community rated poor.**
TMDL Year(s): 2005 RF3RchID: 40201021099

BOND FALLS FLOWAGE (MIDDLE BR. ONTONAGON RIVER) WBID# **221208C**
County: ONTONAGON HUC: 4020102 Size: 2118 A
Location: Bond Falls Flowage is an impoundment in the headwaters of the Middle Br.
Ontonagon River. NE of Sylvania on Rt. 2. and Watersmeet on Rt. 45.
Problem: **Mercury Lake.**
TMDL Year(s): 2011 RF3RchID:

BOYNE RIVER WBID# **081403A**
County: CHARLEVOIX HUC: 4060105 Size: 32 M
Location: Lake Charlevoix confluence u/s to include N. Br. and S. Br.
Problem: **FCA-PCBs.**
TMDL Year(s): 2010 RF3RchID: 4060105 40 0.00

BRICKYARD CREEK WBID# **083005O**
County: CALHOUN HUC: 4050003 Size: 2 M
Location: Vicinity of Battle Creek from Minges Brook confluence u/s.
Problem: **Macroinvertebrate community rated poor.**
TMDL Year(s): 2011 RF3RchID: 40500031160

BROWNSTOWN CREEK WBID# **061301A**
County: WAYNE HUC: 4090004 Size: 7 M
Location: Detroit River confluence u/s to Telegraph Rd.
Problem: **Macroinvertebrate community rated poor.**
TMDL Year(s): 2007 RF3RchID: 4090004

BUCK CREEK WBID# **082805L**
County: KENT HUC: 4050006 Size: 10 M
Location: Grand River confluence u/s to 68th St.
Problem: **Pathogens (Rule 100).**
TMDL Year(s): 2006 RF3RchID: 4050006 8

BURDICK DRAIN WBID# **210414D**
County: LAPEER HUC: 4080204 Size: 0.5 M
Location: Enters NE part of Potters Lake after crossing Davison Rd. and Olgelthorp
Rd., Elba Twp., SE 1/4 of the SW 1/4 of Sec. 6. (T7N, R9E).
Problem: **Untreated sewage discharge, pathogens (Rule 100).**
TMDL Year(s): 2004 RF3RchID: 4080204 0

BURT LAKE WBID# **211305X**
County: CHEBOYGAN HUC: 4070004 Size: 17120 A
Location: Vicinity of Indian River.
Problem: **Mercury Lake.**
TMDL Year(s): 2011 RF3RchID:

BUTTERNUT CREEK WBID# **082808F**
County: MONTCALM HUC: 4050005 Size: 8.5 M
Location: Fish Creek confluence u/s to headwaters.
Problem: **Fish community rated poor; bacterial slimes, pathogens (Rule 100).**
TMDL Year(s): 2006 RF3RchID: 4050005 19

CABLE LAKE WBID# **080313B**
County: IRON HUC: 4030106 Size: 333 A
Location: Copper Country State Forest.
Problem: **Mercury Lake.**
TMDL Year(s): 2011 RF3RchID:

CARIBOU LAKE WBID# **211602E**
County: CHIPPEWA HUC: 4070002 Size: 825 A
Location: West of DeTour Village.
Problem: **Mercury Lake.**
TMDL Year(s): 2011 RF3RchID:

CARO IMPOUNDMENT (CASS RIVER) WBID# **210403E**
County: TUSCOLA HUC: 4080205 Size: 120 A
Location: Vicinity u/s of Caro.
Problem: **FCA-PCBs; Mercury Lake.**
TMDL Year(s): 2010 2011 RF3RchID:

CARP CREEK TO DEER LAKE TO CARP RIVER MOUTH# WBID# **220601A**
County: MARQUETTE HUC: 4020105 Size: 28 M
Location: Carp Creek is a tributary to the Deer Lake Reservoir, which discharges to
the Carp River, thence to Lake Superior.
Problem: **FCA-mercury.**
TMDL Year(s): 2003 RF3RchID:

CARP LAKE (AKA TROUT LAKE) WBID# **211401B**
County: CHIPPEWA HUC: 4070002 Size: 560 A
Location: Vicinity of the community of Trout Lake (sw corner of Chippewa Co.).
Problem: **Mercury Lake.**
TMDL Year(s): 2011 RF3RchID:

CARRIER CREEK WBID# **082812D**
County: EATON HUC: 4050004 Size: 4 M
Location: Grand River confluence u/s to I-496.
Problem: **Macroinvertebrate community rated poor.**
TMDL Year(s): 2002 RF3RchID: 40500041290

CASS LAKE WBID# **061405A**
County: OAKLAND HUC: 4090003 Size: 1280 A
Location: Vicinity of Keego Harbor and West Bloomfield.
Problem: **FCA-PCBs, mercury.**
TMDL Year(s): 2010 2011 RF3RchID:

CASS RIVER WBID# **210402F**
County: SAGINAW HUC: 4080205 Size: 1 M
Location: Vicinity of Caro at East Dayton Rd. u/s
Problem: **WQS exceedances for D.O.**
TMDL Year(s): 2008 RF3RchID: 4080205 7

CASS RIVER# WBID# **210402H**
County: SAGINAW HUC: 4080205 Size: 7 M
Location: Shiawassee River confluence to u/s of Bridgeport.
Problem: **FCA-mercury.**
TMDL Year(s): 2011 RF3RchID:

CEDAR RIVER WBID# **210429A**
County: GLADWIN HUC: 4080201 Size: 9 M
Location: Vicinity of Gladwin; M-61 d/s to Howard Oil Field Road.
Problem: **CSO, pathogens (Rule 100).**
TMDL Year(s): 2004 RF3RchID: 4080201 37

CHALK HILLS IMPOUNDMENT (MENOMINEE RIVER) WBID# **080303B**
County: MENOMINEE HUC: 4030108 Size: 590 A
Location: Chalk Hill Dam u/s to Miscauno Island.
Problem: **Mercury Lake.**
TMDL Year(s): 2011 RF3RchID:

CHANEY LAKE WBID# **221402B**
County: GOGEBIC HUC: 4020101 Size: 520 A
Location: T45N, R45W, SEC 2, 3 AND 10 Bessemer Twp.
Problem: **FCA-mercury.**
TMDL Year(s): 2011 RF3RchID:

CHARLOTTE RIVER WBID# **211701I**
County: CHIPPEWA HUC: 4070001 Size: 3 M
Location: E. of Pine Grove. Reach extends from Rt.- H63 (1.5 miles d/s of 6 Mile Road) u/s to Rt.- H63 (1.5 miles u/s of 6 Mile Road).
Problem: **Macroinvertebrate community rated poor; Nutrient enrichment.**
TMDL Year(s): 2011 RF3RchID: 4070001 434 0.00

CHICAGON LAKE WBID# **080315A**
County: IRON HUC: 4030106 Size: 1100 A
Location: Vicinity of Chicagon.
Problem: **Mercury Lake.**
TMDL Year(s): 2011 RF3RchID:

CLARK LAKE WBID# **061101Q**
County: JACKSON HUC: 4100002 Size: 580 A
Location: NW of Brooklyn.
Problem: **Mercury Lake.**
TMDL Year(s): 2011 RF3RchID:

CLEAR SPRING LAKE (DEVELOPED GRAVEL PIT) WBID# **061405I**
County: MACOMB HUC: 4090003 Size: 65 A
Location: Vicinity of Rochester east side. Old gravel pit that has been developed into subdivision.
Problem: **FCA-PCBs, mercury.**
TMDL Year(s): 2011 RF3RchID:

CLINTON RIVER WBID# **061404C**
County: MACOMB HUC: 4090003 Size: 25 M
Location: Lake St. Clair confluence u/s to Yates Park Dam (just d/s of Utica).
Problem: **FCA-PCBs; CSOs, pathogens (Rule 100).**
TMDL Year(s): 2010 2006 RF3RchID: 4090003 000

CLINTON RIVER WBID# **061404A**
County: OAKLAND HUC: 4090003 Size: 11 M
Location: Yates Dam u/s to Pontiac WWTP outfall .
Problem: **Fish community rated poor.**
TMDL Year(s): 2006 RF3RchID: 4090003 000

CLINTON RIVER WBID# **061404D**
County: MACOMB HUC: 4090003 Size: 1 M
Location: N. Bound Gratiot Avenue (S. Broadway St.), Mt. Clemens. STORET #500233. 1 mile reach (u/s and d/s of Gratiot Avenue).
Problem: **WQS exceedances for mercury.**
TMDL Year(s): 2011 RF3RchID: 4090003

COLDWATER LAKE WBID# **083216C**
County: BRANCH HUC: 4050001 Size: 1610 A
Location: S. of Coldwater.
Problem: **Mercury Lake.**
TMDL Year(s): 2011 RF3RchID:

COLDWATER LAKE WBID# **210424Y**
County: ISABELLA HUC: 4080202 Size: 294 A
Location: NW Mt. Pleasant and S. of Weidman.
Problem: **Mercury Lake.**
TMDL Year(s): 2011 RF3RchID:

COLDWATER RIVER WBID# **082811F**
County: KENT HUC: 4050007 Size: 6 M
Location: From Morse Lake Avenue (Kent County) crossing u/s to Brown Road
(Barry County) in the vicinity of Freeport.
Problem: **Pathogens (Rule 100).**
TMDL Year(s): 2006 RF3RchID: 4050007 23

COON CREEK, E. BR. WBID# **061408C**
County: MACOMB HUC: 4090003 Size: 12 M
Location: Highbank Creek confluence to u/s of Armada.
Problem: **CSOs, pathogens (Rule 100); WQS exceedances for D.O.**
TMDL Year(s): 2006 RF3RchID: 4090003 000

COX DRAIN WBID# **082821G**
County: CLINTON HUC: 4050005 Size: 5.7 M
Location: From Hyde Road (Section 11), d/s to the confluence of Hayworth Creek
(Section 18) in Essex Township, Clinton County.
Problem: **Fish and macroinvertebrate communities rated poor; Nutrient
enrichment, nuisance algal growths.**
TMDL Year(s): 2009 RF3RchID: 4050005 238

CRAIG LAKE WBID# **080308F**
County: BARAGA HUC: 4030107 Size: 307 A
Location: NE of Nestoria.
Problem: **Mercury Lake.**
TMDL Year(s): 2011 RF3RchID:

CRANBERRY CREEK WBID# **210415C**
County: LIVINGSTON HUC: 4080203 Size: 7 M
Location: Yellow River Drain confluence u/s.
Problem: **Fish community rated poor.**
TMDL Year(s): 2007 RF3RchID: 4080203

CROOKED CREEK WBID# **083007J**
County: CALHOUN HUC: 4050003 Size: 2 M
Location: At 11 Mile Rd., Emmett Twp. (T2S, R7W, Sec 35).
Problem: **Macroinvertebrate community rated poor.**
TMDL Year(s): 2011 RF3RchID: 4050003 744 0.00

CROOKED LAKE WBID# **211308X**
County: EMMET HUC: 4070004 Size: 2400 A
Location: Vicinity of Oden and Ponsheawaing.
Problem: **Mercury Lake.**
TMDL Year(s): 2011 RF3RchID:

CROSWELL IMPOUNDMENT (BLACK RIVER) WBID# **061504F**
County: SANILAC HUC: 4090001 Size: 14 A
Location: Black River in the vicinity of Croswell (Croswell Impoundment u/s to the confluence of Elk Cr.)
Problem: **FCA-PCBs.**
TMDL Year(s): 2010 RF3RchID:

CROTON POND (MUSKEGON RIVER) WBID# **082702A**
County: NEWAYGO HUC: 4060102 Size: 1235 A
Location: Croton Twp. R11W, T12N, Sec. 4,5,6,and 7 near Croton
Problem: **Mercury Lake.**
TMDL Year(s): 2011 RF3RchID:

CRYSTAL LAKE WBID# **081801D**
County: BENZIE HUC: 4060104 Size: 9711 A
Location: Vicinity of Benzonia and Beulah.
Problem: **FCA-PCBs.**
TMDL Year(s): 2010 RF3RchID:

CULVER CREEK WBID# **210501A**
County: BAY HUC: 4080102 Size: 0.5 M
Location: Kawkawlin River confluence u/s.
Problem: **Macroinvertebrate community rated poor.**
TMDL Year(s): 2007 RF3RchID: 4080102 12

DAVIS CREEK WBID# **083005V**
County: KALAMAZOO HUC: 4050003 Size: 4.6 M
Location: Kalamazoo River confluence u/s to Cork Street.
Problem: **Oil.**
TMDL Year(s): 2006 RF3RchID: 40500030056

DEER CREEK WBID# **061408D**
County: MACOMB HUC: 4090003 Size: 7 M
Location: N. Br. Clinton River confluence u/s.
Problem: **Pathogens (Rule 100).**
TMDL Year(s): 2006 RF3RchID: 4090003 000

DEER CREEK WBID# **083301D**
County: BERRIEN HUC: 4040001 Size: 7 M
Location: S. Br. Galien River confluence u/s to the headwaters in vicinity of Three
Problem: **Untreated sewage discharge, pathogens (Rule 100);
Macroinvertebrate community rated poor; Nuisance algae and**
TMDL Year(s): 2002 RF3RchID: 4040001 440 0.00

DEER CREEK WBID# **082801K**
County: OTTAWA HUC: 4050006 Size: 47 M
Location: Grand River confluence u/s to headwaters headwaters - entire watershed including Beaver Creek.
Problem: **D.O. violations; Fish and macroinvertebrate communities rated poor; Fish kills; Nutrient enrichment; Untreated sewage discharge, pathogens (Rule 100).**
TMDL Year(s): 2011 RF3RchID: 4050006 36 0.00

DETROIT RIVER WBID# **061401A**
County: WAYNE HUC: 4090004 Size: 28 M
Location: Entire river from Lake St. Clair d/s Lake Erie.
Problem: **FCA-PCBs, TCDD (dioxin), mercury; WQS exceedances for mercury; CSO, pathogens (Rule 100);**
TMDL Year(s): **2008 2011 2007** RF3RchID: 4090004 000

DOWAGIAC RIVER WBID# **083205J**
County: CASS HUC: 4050001 Size: 8 M
Location: St. Joseph River confluence u/s to Pucker Street Dam, thence, u/s to the community of Sumnerville
Problem: **FCA-PCBs.**
TMDL Year(s): **2010** RF3RchID: 4050001 62 0.00

DUCK LAKE WBID# **221207X**
County: GOGEBIC HUC: 4020102 Size: 610 A
Location: SW of Watersmeet.
Problem: **Mercury Lake.**
TMDL Year(s): **2011** RF3RchID:

DUFF CREEK WBID# **210406A**
County: SANILAC HUC: 4080205 Size: 6 M
Location: S.Br. Cass River u/s to vicinity of Marlette.
Problem: **Untreated sewage discharges, pathogens (Rule 100); Macroinvertebrate community rated poor.**
TMDL Year(s): **2004 2009** RF3RchID: 4080205 20 0.00

DUKE CREEK WBID# **082804K**
County: KENT HUC: 4050006 Size: 11 M
Location: NW of Sparta and tributary to the Rogue River. Tyrone Twp., Sec. 36, u/s Nelson Twp., Sec. 6.
Problem: **Macroinvertebrate community rated poor.**
TMDL Year(s): **2006** RF3RchID: 4050006 32

EAGLE RIVER, E. AND W. BRANCHES# WBID# **220901D**
County: KEWEENAW HUC: 4020103 Size: 8.5 M
Location: U/s from the confluence of these two streams (vicinity of Phoenix).
Problem: **WQS exceedances for copper; Macroinvertebrate community rated**
TMDL Year(s): **2008** RF3RchID:

EAST POND CREEK WBID# **061408G**
County: MACOMB HUC: 4090003 Size: 8 M
Location: N. Br. Clinton River confluence u/s to East Mill Lake outlet, NW of Romeo.
Problem: **Untreated sewage discharge, pathogens (Rule 100).**
TMDL Year(s): **2006** RF3RchID: 4090003 364 0.00

ECHO LAKE WBID# **220401B**
County: ALGER HUC: 4020201 Size: 210 A
Location: Grand Isle (island off shore at Munising).
Problem: **Mercury Lake.**
TMDL Year(s): **2011** RF3RchID:

ECORSE RIVER WBID# **061301I**
County: WAYNE HUC: 4090004 Size: 25 M
Location: Detroit River confluence u/s (so as to include Ecorse Creek and La Blanc
Problem: **Macroinvertebrate community rated poor; Untreated sewage discharges, pathogens (Rule 100).**
TMDL Year(s): 2003 RF3RchID: 4090004 175 0.00

ELK LAKE WBID# **081501C**
County: ANTRIM/GRAND TRAVERSE HUC: 4060105 Size: 7730 A
Location: Vicinity of Elk Rapids.
Problem: **FCA-PCBs, mercury.**
TMDL Year(s): 2010 2011 RF3RchID:

ELLSWORTH LAKE WBID# **081503I**
County: ANTRIM HUC: 4060105 Size: 120 A
Location: Vicinity of Ellsworth.
Problem: **Mercury Lake.**
TMDL Year(s): 2011 RF3RchID:

ESCANABA RIVER WBID# **080601D**
County: DELTA HUC: 4030110 Size: 1 M
Location: Lake Michigan confluence u/s.
Problem: **WQS exceedance for PCBs and mercury.**
TMDL Year(s): 2010 2011 RF3RchID: 4030110 30 0.00

FARMERS CREEK WBID# **083204E**
County: BERRIEN HUC: 4050001 Size: 1 M
Location: Pipestone Road (Park Road) u/s - Vicinity of Eau Claire WWSL.
Problem: **Untreated sewage discharge, pathogens (Rule 100); Nuisance algal growths.**
TMDL Year(s): 2008 RF3RchID: 40500011762

FAWN RIVER WBID# **083214D**
County: ST. JOSEPH, BRANCH HUC: 4050001 Size: 30 M
Location: St. Joseph River confluence u/s (excluding Indiana waters).
Problem: **FCA-PCBs.**
TMDL Year(s): 2010 RF3RchID: 4050001 24 0.00

FENNER LAKE WBID# **083004F**
County: ALLEGAN HUC: 4050003 Size: 27 A
Location: NW of Martin (T2N, R11W, S15).
Problem: **FCA-PCBs; Mercury Lake; Nutrients, nuisance plants growths.**
TMDL Year(s): 2010 2011 2006 RF3RchID:

FENTON LAKE WBID# **210416X**
County: GENESEE HUC: 4080203 Size: 845 A
Location: Vicinity of Fenton.
Problem: **Mercury Lake.**
TMDL Year(s): 2011 RF3RchID:

FISH LAKE WBID# **083004P**
County: BARRY HUC: 4050003 Size: 165 A
Location: East of Orangeville.
Problem: **Mercury Lake.**
TMDL Year(s): 2011 RF3RchID:

FIVE LAKES WBID# **210427Y**
County: CLARE HUC: 4080201 Size: 120 A
Location: NW of Clare.
Problem: **Mercury Lake.**
TMDL Year(s): 2011 RF3RchID:

FLAT RIVER WBID# **082807A**
County: KENT HUC: 4050006 Size: 46 M
Location: Grand River confluence (Vicinity of Lowell) u/s of the Greenville
Problem: **FCA-PCBs.**
TMDL Year(s): 2010 RF3RchID: 40500060021

FLINT RIVER WBID# **210409C**
County: SAGINAW/GENESEE HUC: 4080204 Size: 52 M
Location: From the Shiawassee River confluence u/s to the first dam just d/s of the
IMA Auditorium in the vicinity of Flint.
Problem: **FCA-PCBs.**
TMDL Year(s): 2010 RF3RchID: 4080204 941 0.00

FLINT RIVER, S. BR. WBID# **210413P**
County: LAPEER HUC: 4080204 Size: 15 M
Location: Winns Pond u/s to the Lapeer Co. and Oakland Co. line to Horseshoe Lake
outlet.
Problem: **Fish community rated poor.**
TMDL Year(s): 2010 RF3RchID: 4080204 2112.18

FORD LAKE/BELLEVILLE LAKE (IMP. OF HURON) WBID# **061203N**
County: WASHTENAW/WAYNE HUC: 4090005 Size: 2245 A
Location: Impoundments of the Huron River located between the cities of Ypsilanti
and Romulus.
Problem: **FCA-PCBs.**
TMDL Year(s): 2010 RF3RchID:

FORESTVILLE BASIN (DEAD RIVER) WBID# **220602A**
County: MARQUETTE HUC: 4020105 Size: 85 A
Location: From the Tourist Park Dam u/s to the powerhouse at the west end of the
Forestville Reservoir.
Problem: **Mercury Lake.**
TMDL Year(s): 2011 RF3RchID:

FORTUNE LAKE (SECOND LAKE) WBID# **080315E**
County: IRON HUC: 4030106 Size: 103 A
Location: Vicinity of Fortune Lake.
Problem: **Mercury Lake.**
TMDL Year(s): 2011 RF3RchID:

FOUR MILE LAKE WBID# **061204F**
County: WASHTENAW HUC: 4090005 Size: 256 A
Location: West of Dexter and NE of Chelsea in the Chelsea State Game Area.
Problem: **Mercury Lake.**
TMDL Year(s): 2011 RF3RchID:

FRANK AND POET DRAIN WBID# **061301K**
County: WAYNE HUC: 4090004 Size: 14 M
Location: Detroit River confluence u/s, including all tribs. Vicinity of Gibraltar.
Problem: **Macroinvertebrate community rated poor.**
TMDL Year(s): 2007 RF3RchID: 4090004 154 0.00

FUMEE LAKE WBID# **080304C**
County: DICKINSON HUC: 4030108 Size: 480 A
Location: North of Quinnesec.
Problem: **Mercury Lake.**
TMDL Year(s): 2011 RF3RchID:

FURLONG CREEK WBID# **081202B**
County: MACKINAC HUC: 4060107 Size: 2 M
Location: Indian Road u/s to Raski Road; vicinity of Engadine.
Problem: **Macroinvertebrate community rated poor.**
TMDL Year(s): 2006 RF3RchID: 4060107 646

GALIEN RIVER WBID# **083301A**
County: BERRIEN HUC: 4040001 Size: 2 M
Location: Galien River in the vicinity of New Troy (Flynn Rd. u/s to Elm Valley Rd).
Problem: **WQS exceedances for E. coli.; pathogens (Rule 100).**
TMDL Year(s): 2002 RF3RchID: 4040001 2213.84

GALIEN RIVER WBID# **083301G**
County: BERRIEN HUC: 4040001 Size: 6 M
Location: Lake Michigan confluence u/s to I-94.
Problem: **FCA-PCBs, chlordane.**
TMDL Year(s): 2009 RF3RchID: 4040001 22 0.00

GALIEN RIVER, E. BR. WBID# **083301F**
County: BERRIEN HUC: 4040001 Size: 12 M
Location: Galien River confluence u/s to the Yellow Lake and Wagner Lake outlets.
Problem: **Nutrient enrichment, nuisance algal growths.**
TMDL Year(s): 2009 RF3RchID: 4040001 27 0.00

GLEN LAKE WBID# **081702A**
County: LEELANAU HUC: 4060104 Size: 4865 A
Location: South of Glen Arbor.
Problem: **FCA-PCBs, chlordane; mercury.**
TMDL Year(s): 2009 2011 RF3RchID:

GOOSE LAKE WBID# **080605D**
County: MARQUETTE HUC: 4030110 Size: 441 A
Location: SE of Neguanee and Ishpeming.
Problem: **FCA-PCBs; Mercury Lake.**
TMDL Year(s): 2010 2011 RF3RchID:

GRAND RIVER WBID# **082801J**
County: OTTAWA HUC: 4050006 Size: 1 M
Location: In the vicinity of Grand Haven near the gaging station located towards the east end of the navigational channel upstream from Lake Michigan.
Problem: **WQS exceedances for mercury.**
TMDL Year(s): 2011 RF3RchID: 4050006 336

GRAND RIVER WBID# **082812B**
County: EATON HUC: 4050004 Size: 0.5 M
Location: Grand Ledge (Sec.2, T4N,R4W)
Problem: **CSO, pathogens (Rule 100).**
TMDL Year(s): 2008 RF3RchID: 4050004 23

GRAND RIVER WBID# **082806A**
County: KENT HUC: 4050006 Size: 1 M
Location: Johnson Park, vicinity of Walker. T6N, R12W, Sec. 7.
Problem: **CSO, pathogens (Rule 100).**
TMDL Year(s): 2006 RF3RchID: 4050006 9

GRAND RIVER AND PORTAGE RIVER WBID# **082816H**
County: JACKSON HUC: 4050004 Size: 25 M
Location: Grand River from Tompkins Rd. u/s to the City of Jackson and Portage
River from the Grand River confluence u/s to Wooster Rd.
Problem: **Untreated sewage discharge, pathogens (Rule 100); WQS
exceedances for D.O.; Macroinvertebrate and fish communities**
TMDL Year(s): 2003 RF3RchID: 4050004

GRAND RIVER AND RED CEDAR RIVER WBID# **082801F**
County: OTTAWA/JACKSON HUC: 4050006 Size: 235 M
Location: Lake Michigan confluence u/s to the vicinity of Jackson and Red Cedar
River from Grand River confluence upstream to Michigan State University
Problem: **FCA-PCBs; WQS exceedances for PCBs.**
TMDL Year(s): 2009 RF3RchID: 4050006 1

GRAND RIVER AND RED CEDAR RIVER# WBID# **082815D**
County: INGHAM HUC: 4050004 Size: 12 M
Location: The Grand River from Webster Road (vicinity of Delta Mills) u/s to Moores
River Dam and the Red Cedar River from the Grand River confluence
u/s to Kalamazoo Street.
Problem: **CSO, pathogens (Rule 100); WQS exceedances for D.O.; Fish kills.**
TMDL Year(s): 2011 RF3RchID:

GRAND SABLE LAKE WBID# **220401X**
County: ALGER HUC: 4020201 Size: 630 A
Location: Grand Sable State forest.
Problem: **Mercury Lake.**
TMDL Year(s): 2011 RF3RchID:

GREEN BAY (LAKE MICHIGAN) WBID# **080000C**
County: DELTA/MENOMINEE HUC: 4060200 Size: 1560 Mi2
Location: Green Bay - Applies to Michigan waters.
Problem: **FCA-PCBs, dioxin, mercury.**
TMDL Year(s): 2012 2011 RF3RchID:

GREEN LAKE WBID# **081801G**
County: GRAND TRAVERSE HUC: 4060104 Size: 1987 A
Location: Vicinity of Interlochen.
Problem: **Mercury Lake.**
TMDL Year(s): 2011 RF3RchID:

GREENWOOD RESERVOIR (ESCANABA RIVER) WBID# **080605B**
County: MARQUETTE HUC: 4030110 Size: 1088 A
Location: Impoundment of the Middle Branch Escanaba River.
Problem: **FCA-mercury.**
TMDL Year(s): 2011 RF3RchID:

GULL LAKE WBID# **083005I**
County: KALAMAZOO/BARRY HUC: 4050003 Size: 2030 A
Location: Vicinity of Midland Park, Yorkville and MSU's Kellogg Biological Station.
Problem: **FCA-PCBs; Mercury Lake.**
TMDL Year(s): 2010 2011 RF3RchID:

GULLIVER LAKE WBID# **081201J**
County: SCHOOLCRAFT HUC: 4060107 Size: 837 A
Location: Vicinity of Gulliver, S of R#2.
Problem: **Mercury Lake.**
TMDL Year(s): 2011 RF3RchID:

GUN LAKE WBID# **083004I**
County: BARRY HUC: 4050003 Size: 2680 A
Location: At Yankee Springs State Park (Yankee Springs Twp.)
Problem: **Pathogens (Rule 100).**
TMDL Year(s): 2011 RF3RchID:

GUN RIVER WBID# **083004M**
County: ALLEGAN HUC: 4050003 Size: 1 M
Location: 122nd Avenue u/s to Gun Lake.
Problem: **Macroinvertebrate community rated poor.**
TMDL Year(s): 2011 RF3RchID: 40500031310

HAMILTON LAKE WBID# **080303A**
County: DICKINSON HUC: 4030108 Size: 75 A
Location: SE of Loretto.
Problem: **Mercury Lake.**
TMDL Year(s): 2011 RF3RchID:

HAMLIN LAKE WBID# **082002B**
County: MASON HUC: 4060101 Size: 4990 A
Location: Vicinity of Hamlin Lakes.
Problem: **Mercury Lake.**
TMDL Year(s): 2011 RF3RchID:

HAMMELL CREEK WBID# **221001O**
County: HOUGHTON HUC: 4020103 Size: 5 M
Location: Trapp Rock River confluence u/s.
Problem: **WQS exceedances for mercury.**
TMDL Year(s): 2002 RF3RchID: 4020103 306 0.00

HAVEN-MAX LAKE DR./GREAT BEAR LAKE AND DRAIN# WBID# **083102L**
County: VAN BUREN HUC: 4050002 Size: 4 M
Location: U/s of Great Bear Lake d/s to Great Bear Lake d/s via Great Bear Lake
Drain confluence with S. Br. Black River.
Problem: **Nutrient enrichment, nuisance algal growths.**
TMDL Year(s): 2004 RF3RchID:

HERON LAKE WBID# **210414F**
County: OAKLAND HUC: 4080204 Size: 132 A
Location: NW of Austin Corners and NW of Valley and Wildwood lakes.
Problem: **Mercury Lake.**
TMDL Year(s): 2011 RF3RchID:

HESS LAKE WBID# **082702L**
County: NEWAYGO HUC: 4060102 Size: 1125 A
Location: SE of Newaygo.
Problem: **FCA-PCBs.**
TMDL Year(s): 2010 RF3RchID:

HIGGINS LAKE WBID# **082713A**
County: ROSCOMMON HUC: 4060102 Size: 9600 A
Location: Vicinity of Roscommon.
Problem: **FCA-PCBs, chlordane and mercury.**
TMDL Year(s): 2010 2011 RF3RchID:

HOLLOWAY RESERVOIR (FLINT RIVER IMP.) WBID# **210411X**
County: GENESEE HUC: 4080204 Size: 954 A
Location: NE of Richfield Center (Flint area).
Problem: **FCA-PCBs.**
TMDL Year(s): 2010 RF3RchID:

HOLLY DRAIN/THREE MILE CREEK WBID# **210416E**
County: SHIAWASSEE HUC: 4080203 Size: 15 M
Location: Shiawassee River confluence u/s so as to include Three Mile Creek.
Problem: **Untreated sewage discharge, Pathogen (Rule 100).**
TMDL Year(s): 2010 RF3RchID: 4080203 677 0.00

HONEY CREEK WBID# **061205Q**
County: LIVINGSTON HUC: 4090005 Size: 16 M
Location: Vicinity of Pinckney. Mill Pond at Toma Road u/s to include headwaters.
Problem: **Macroinvertebrate community rated poor.**
TMDL Year(s): 2007 RF3RchID: 4090005 615 5.34

HONEY CREEK WBID# **061205AI**
County: WASHTENAW HUC: 4090005 Size: 0.5 M
Location: Confluence of Huron River u/s to Wagner Rd.
Problem: **Pathogens (Rule 100)**
TMDL Year(s): 2009 RF3RchID: 4090005 19

HORSESHOE LAKE DRAIN WBID# **061205R**
County: LIVINGSTON/WASHTENAW HUC: 4090005 Size: 1.4 M
Location: Barker Road u/s to the Horseshoe Lake outlet.
Problem: **Macroinvertebrate community rated poor.**
TMDL Year(s): 2009 RF3RchID: 4090005 645

HOUGHTON LAKE WBID# **082713B**
County: ROSCOMMON HUC: 4060102 Size: 20044 A
Location: Vicinity of Houghton Lake, Houghton Heights and Prudenville.
Problem: **FCA-PCBs.**
TMDL Year(s): 2010 RF3RchID:

HUBBARD LAKE WBID# **211001C**
County: ALCONA HUC: 4070006 Size: 8850 A
Location: Vicinity of Backus Beach.
Problem: **Mercury Lake.**
TMDL Year(s): 2011 RF3RchID:

INTERMEDIATE LAKE WBID# **081503H**
County: ANTRIM HUC: 4060105 Size: 1520 A
Location: Vicinity of Central Lake community.
Problem: **Mercury Lake.**
TMDL Year(s): 2011 RF3RchID:

JOHNSON CREEK WBID# **061304I**
County: WAYNE, WASHTENAW HUC: 4090004 Size: 7 M
Location: Walled Lake Br. confluence u/s to 5-mile Rd.
Problem: **WQS exceedances for D.O.**
TMDL Year(s): 2007 RF3RchID: 4090004 248 0.00

JORDAN LAKE WBID# **082811A**
County: BARRY/IONIA HUC: 4050007 Size: 430 A
Location: In the vicinity of Lake Odessa.
Problem: **Mercury Lake.**
TMDL Year(s): 2011 RF3RchID:

KALAMAZOO RIVER WBID# **083001D**
County: ALLEGAN HUC: 4050003 Size: 1 M
Location: 57th Street in the vicinity of New Richmond.
Problem: **WQS exceedances for mercury.**
TMDL Year(s): 2011 RF3RchID: 4050003 5

KALAMAZOO RIVER (Includes Morrow Pond, Lake Allegan, and Kalamazoo Lake) WBID# **083005A**
County: CALHOUN/KALAMAZOO/ALLEGAN HUC: 4050003 Size: 85 M
Location: Kalamazoo River (Lake Michigan confluence u/s to the Battle Creek
Problem: **FCA-PCBs; WQS exceedances for PCBs.**
TMDL Year(s): 2006 RF3RchID: 40500031411

KAWKAWLIN RIVER WBID# **210501F**
County: BAY HUC: 4080102 Size: 5 M
Location: Saginaw Bay confluence u/s to the N. Br. Kawkawlin River confluence.
Problem: **FCA-PCBs.**
TMDL Year(s): 2002 RF3RchID: 4080102 5

KAWKAWLIN RIVER, N. BR. WBID# **210501G**
County: BAY HUC: 4080102 Size: 13 M
Location: Kawkawlin River confluence u/s to Eightmile Road.
Problem: **WQS exceedance for D.O.**
TMDL Year(s): 2007 RF3RchID: 4080102 6

KENT LAKE WBID# **061206R**
County: OAKLAND HUC: 4090005 Size: 1000 A
Location: An impoundment on the mainstem of the Huron River. The u/s boundry is Dawson Rd. d/s to the Kent Lake spillway at I-96.
Problem: **FCA-PCBs.**
TMDL Year(s): 2010 RF3RchID:

KIDS CREEK			WBID# 081601D
County: GRAND TRAVERSE	HUC: 4060105	Size:	3 M
Location: Boardman River confluence u/s to M-37/US-31.			
Problem: Macroinvertebrate community rated poor.			
TMDL Year(s): 2010		RF3RchID:	4060105 938 0.00
KLINGER LAKE			WBID# 083215B
County: ST. JOSEPH	HUC: 4050001	Size:	830 A
Location: East of White Pigeon and West of Stugis.			
Problem: Mercury Lake.			
TMDL Year(s): 2011		RF3RchID:	
LAKE ANN			WBID# 081701A
County: BENZIE	HUC: 4060104	Size:	527 A
Location: Vicinity of Lake Ann.			
Problem: Mercury Lake.			
TMDL Year(s): 2011		RF3RchID:	
LAKE BELLAIRE			WBID# 081503G
County: ANTRIM	HUC: 4060105	Size:	1775 A
Location: Vicinity of Bellaire.			
Problem: Mercury Lake.			
TMDL Year(s): 2011		RF3RchID:	
LAKE BESSER (NINTH STREET POND)			WBID# 211002C
County: ALPENA	HUC: 4070006	Size:	392 A
Location: Vicinity of Alpena.			
Problem: Mercury Lake.			
TMDL Year(s): 2011		RF3RchID:	
LAKE EMILY			WBID# 080315Y
County: IRON	HUC: 4030106	Size:	320 A
Location: N. of Chicagon.			
Problem: Mercury Lake.			
TMDL Year(s): 2011		RF3RchID:	
LAKE ERIE			WBID# 060000A
County: MONROE/WAYNE	HUC: 4120200	Size:	115 MI2
Location: Lake Erie waters under Michigan jurisdiction.			
Problem: FCA-PCBs, dioxin.			
TMDL Year(s): 2012		RF3RchID:	
LAKE ERIE - LUNA PIER BEACH			WBID# 060101D
County: MONROE	HUC: 4100001	Size:	1 M
Location: City of Luna Pier beach, Lake Erie.			
Problem: Beach closings; pathogens (Rule 100).			
TMDL Year(s): 2007		RF3RchID:	
LAKE GOGEBIC			WBID# 221204F
County: GOGEBIC	HUC: 4020102	Size:	12800 A
Location: Vicinity of Bergland and Lake Gogebic.			
Problem: Mercury Lake.			
TMDL Year(s): 2011		RF3RchID:	

LAKE HURON			WBID# 210000A
County: MACKINAC/ST.CLAIR	HUC: 4080300	Size:	9100 MI2
Location: Lake Huron waters under Michigan jurisdiction.			
Problem: FCA-PCBs, chlordane, dioxin.			
TMDL Year(s): 2012		RF3RchID:	
LAKE HURON - BURTCHVILLE TWP. PARK BEACH			WBID# 210101F
County: ST. CLAIR	HUC: 4080104	Size:	1 M
Location: East end of Harris Rd.			
Problem: Beach closings, pathogens (Rule 100).			
TMDL Year(s): 2005		RF3RchID:	
LAKE HURON - KEEWADHIN ROAD BEACH			WBID# 210101G
County: ST. CLAIR	HUC: 4080104	Size:	1 M
Location: East end Keewahdin Rd.			
Problem: Beach closings, pathogens (Rule 100).			
TMDL Year(s): 2005		RF3RchID:	
LAKE HURON - LAKEPORT STATE CAMPGROUND			WBID# 210101D
County: ST. CLAIR	HUC: 4080104	Size:	1 M
Location: Lakeport State Park, N. of Lakeport.			
Problem: Beach closings, pathogens (Rule 100).			
TMDL Year(s): 2005		RF3RchID:	
LAKE HURON - METCALF ROAD BEACH			WBID# 210101E
County: ST. CLAIR	HUC: 4080104	Size:	1 M
Location: East end Metcalf Rd.			
Problem: Beach closings, pathogens (Rule 100).			
TMDL Year(s): 2005		RF3RchID:	
LAKE INDEPENDENCE			WBID# 220702X
County: MARQUETTE	HUC: 4020105	Size:	1860 A
Location: Vicinity of Big Bay.			
Problem: Mercury Lake.			
TMDL Year(s): 2011		RF3RchID:	
LAKE MACATAWA (MACATAWA RIVER MOUTH)			WBID# 082901D
County: OTTAWA	HUC: 4050002	Size:	1780 A
Location: Vicinity of Holland (Park and Holland Twps.).			
Problem: FCA-PCBs, chlordane.			
TMDL Year(s): 2009		RF3RchID:	
LAKE MARGRETHE			WBID# 081907X
County: CRAWFORD	HUC: 4060103	Size:	1920 A
Location: SW of Grayling.			
Problem: Mercury Lake.			
TMDL Year(s): 2011		RF3RchID:	
LAKE MICHIGAN - NORTH OF FRANKFORT			WBID# 080000A
County: BENZIE/DELTA	HUC: 4060200	Size:	6915 MI2
Location: Lake Michigan waters under Michigan jurisdiction located north of			
Problem: FCA-PCBs, chlordane, dioxin, mercury.			
TMDL Year(s): 2012		RF3RchID:	

LAKE MICHIGAN - SOUTH OF FRANKFORT			WBID# 080000B
County: BENZIE/BERRIEN	HUC: 4060200	Size:	13825 MI2
Location: Lake Michigan waters under Michigan jurisdiction located south of			
Problem: FCA-PCBs, chlordane, DDT, dioxin, mercury.			
TMDL Year(s): 2012		RF3RchID:	
LAKE MITCHELL			WBID# 082712Z
County: WEXFORD	HUC: 4060102	Size:	2580 A
Location: W. of Cadillac.			
Problem: Mercury Lake.			
TMDL Year(s): 2011		RF3RchID:	
LAKE NEPESSING			WBID# 210413J
County: LAPEER	HUC: 4080204	Size:	414 A
Location: SW of Lapeer, Elba Twp.			
Problem: Mercury Lake.			
TMDL Year(s): 2011		RF3RchID:	
LAKE ORION			WBID# 061406A
County: OAKLAND	HUC: 4090003	Size:	470 A
Location: Orion Twp. at Lake Orion.			
Problem: FCA-PCBs, mercury.			
TMDL Year(s): 2010 2011		RF3RchID:	
LAKE PONEMAH			WBID# 210416Z
County: GENESEE	HUC: 4080203	Size:	380 A
Location: NW of Fenton.			
Problem: Mercury Lake.			
TMDL Year(s): 2011		RF3RchID:	
LAKE ST. CLAIR			WBID# 061000A
County: MACOMB/WAYNE	HUC: 4090002	Size:	430 Mi2
Location: Lake St. Clair waters under Michigan jurisdiction.			
Problem: FCA-PCBs, mercury.			
TMDL Year(s): 2010 2011		RF3RchID:	
LAKE ST. CLAIR METROPOLITAN BEACH			WBID# 061403A
County: MACOMB	HUC: 4090002	Size:	2 M
Location: Metropolitan Beach area.			
Problem: Beach closings; CSO, pathogens (Rule 100).			
TMDL Year(s): 2006		RF3RchID:	
LAKE ST. CLAIR SHORES MEMORIAL BEACH			WBID# 061403B
County: MACOMB	HUC: 4090002	Size:	1 M
Location: Lake St. Clair at Memorial Beach			
Problem: Beach closings; CSO, pathogens (Rule 100).			
TMDL Year(s): 2006		RF3RchID:	
LAKE SUPERIOR			WBID# 220000A
County: CHIPPEWA/GOGEBIC	HUC: 4020300	Size:	16400 MI2
Location: Lake Superior waters under Michigan jurisdiction.			
Problem: FCA-PCBs, chlordane, dioxin, mercury.			
TMDL Year(s): 2012		RF3RchID:	

LAKEVILLE LAKE WBID# **061407A**
County: OAKLAND HUC: 4090003 Size: 460 A
Location: Vicinity of Lakeville NW of Romeo.
Problem: **Mercury Lake.**
TMDL Year(s): 2011 RF3RchID:

LANGFORD LAKE WBID# **221205A**
County: GOGEBIC HUC: 4020102 Size: 481 A
Location: SE of Marenisco.
Problem: **FCA-mercury.**
TMDL Year(s): 2011 RF3RchID:

LAPOINTE DRAIN WBID# **060101E**
County: MONROE HUC: 4100001 Size: 0.6 M
Location: About 2000 feet u/s of the Lake Erie confluence in the vicinity of the
Luna Pier WWTP outfall.
Problem: **D.O. WQS exceedance, Nutrient enrichment, Nuisance algal**
TMDL Year(s): 2007 RF3RchID: 4100001039714.

LENAWEE COUNTY DRAIN No.70 WBID# **061103H**
County: LENAWEЕ HUC: 4100002 Size: 1 M
Location: Tributary to Big Meadow Creek, Palmyra Twp from Manor Farms and
Humphrey Hwy d/s to west of Palmyra
Problem: **Untreated sewage discharge, pathogens (Rule 100).**
TMDL Year(s): 2002 RF3RchID: 4100002 575

LETTS CREEK WBID# **061204D**
County: WASHTENAW HUC: 4090005 Size: 1.4 M
Location: One half mile u/s of M-52 to its confluence with the North Fork Mill Creek.
Problem: **Fish and macroinvertebrate communities rated poor.**
TMDL Year(s): 2004 RF3RchID: 4090005 20

LILY LAKE WBID# **082708C**
County: CLARE HUC: 4060102 Size: 161 A
Location: NE of Lake George.
Problem: **Mercury Lake.**
TMDL Year(s): 2011 RF3RchID:

LIMEKILN LAKE WBID# **061205T**
County: LIVINGSTON HUC: 4090005 Size: 28 A
Location: W. of S. Lyon just d/s of Rushton Rd. on Yerkes Drain.
Problem: **Nutrient enrichment.**
TMDL Year(s): 2004 RF3RchID:

LINCOLN LAKE WBID# **082807Z**
County: KENT HUC: 4050006 Size: 411 A
Location: NW of Greenville.
Problem: **Mercury Lake.**
TMDL Year(s): 2011 RF3RchID:

LITTLE BAY DE NOC (LAKE MICHIGAN) WBID# **080801B**
County: DELTA HUC: 4030111 Size: 45 MI2
Location: Lake Michigan in the vicinity of Escanaba. Outer boundary between
Portage Point and Dutchman Point.
Problem: **FCA-PCB, mercury.**
TMDL Year(s): 2010 2011 RF3RchID:

LITTLE BLACK CREEK WBID# **082701T**
County: MUSKEGON HUC: 4060101 Size: 7 M
Location: Mona Lake inlet u/s.
Problem: **Fish and macroinvertebrate communities rated poor.**
TMDL Year(s): 2003 RF3RchID: 4060101 13

LITTLE RABBIT RIVER WBID# **083002E**
County: ALLEGAN HUC: 4050003 Size: 7 M
Location: Rabbit River confluence u/s (does not include Red Run Drain - because of separate listing).
Problem: **Macroinvertebrate community rated poor.**
TMDL Year(s): 2010 RF3RchID: 4050003 45 0.29

LITTLEFIELD LAKE WBID# **210424E**
County: ISABELLA HUC: 4080202 Size: 183 A
Location: N. of Weidman.
Problem: **Mercury Lake.**
TMDL Year(s): 2011 RF3RchID:

LONG LAKE WBID# **082807Y**
County: IONIA HUC: 4050006 Size: 356 A
Location: NE of Belding and W. of Shiloh.
Problem: **Mercury Lake.**
TMDL Year(s): 2011 RF3RchID:

LOST CREEK WBID# **082820B**
County: CLINTON HUC: 4050005 Size: 2.5 M
Location: From the confluence with Stoney Creek u/s (between Townsend and Walker Road).
Problem: **Fish and macroinvertebrate communities rated poor; Nutrient enrichment and nuisance algal growths; Bacterial slimes.**
TMDL Year(s): 2009 RF3RchID: 4050005 199

LOWER TROUT LAKE WBID# **061406E**
County: OAKLAND HUC: 4090003 Size: 62 A
Location: W. of Goodison.
Problem: **Mercury Lake.**
TMDL Year(s): 2011 RF3RchID:

MACEDAY LAKE WBID# **061406F**
County: OAKLAND HUC: 4090003 Size: 200 A
Location: Vicinity of Waterford.
Problem: **FCA-PCBs, mercury.**
TMDL Year(s): 2010 2011 RF3RchID:

MACON CREEK WBID# **061101C**
County: LENAWEЕ HUC: 4100002 Size: 9 M
Location: Raisin River confluence u/s headwaters at Neblo Rd.
Problem: **Fish kills, fish and macroinvertebrate community rated poor.**
TMDL Year(s): 2005 RF3RchID: 4100002 7

MALLETS CREEK WBID# **061203I**
County: WASHTENAW HUC: 4090005 Size: 2 M
Location: Huron River confluence u/s to Packard Rd.
Problem: **Fish and macroinvertebrate communities rated poor.**
TMDL Year(s): 2004 RF3RchID: 4090005 499

MANISTEE LAKE WBID# **081901A**
County: MANISTEE HUC: 4060103 Size: 930 A
Location: East of Manistee, Filer Twp.
Problem: **FCA-PCBs, mercury; CSO, pathogens (Rule 100).**
TMDL Year(s): 2010 2011 2006 RF3RchID:

MANISTIQUE RIVER WBID# **081103I**
County: SCHOOLCRAFT HUC: 4060106 Size: 2 M
Location: Lake Michigan confluence u/s to old US-2 (M-94).
Problem: **CSO, pathogens (Rule 100).**
TMDL Year(s): 2011 RF3RchID: 4060106 2

MANISTIQUE RIVER AND NORTH MANISTIQUE LAKE# WBID# **081103B**
County: SCHOOLCRAFT HUC: 4060106 Size: 45 M
Location: Manistique River (mouth u/s to M-77) and N. Manistique Lake.
Problem: **FCA-mercury; WQS exceedances for mercury.**
TMDL Year(s): 2011 RF3RchID:

MAPLE RIVER WBID# **082821D**
County: GRATIOT/CLINTON/SHIAWASSE HUC: 4050005 Size: 28 M
Location: East of Maple River State Game Area. Ransom Road (NW of Bannister)
u/s Warren Road; SE of Ovid.
Problem: **Nutrient enrichment, nuisance plant growths.**
TMDL Year(s): 2009 RF3RchID: 4050005 10

MARION LAKE WBID# **221208B**
County: GOGEBIC HUC: 4020102 Size: 318 A
Location: W. of Watersmeet.
Problem: **Mercury Lake.**
TMDL Year(s): 2011 RF3RchID:

MARTEN LAKE WBID# **220803C**
County: IRON HUC: 4020104 Size: 176 A
Location: Ottawa National Forest. 2 miles south of Houghton/Baraga county line.
Problem: **Mercury Lake.**
TMDL Year(s): 2011 RF3RchID:

MCKINZIE CREEK WBID# **083205H**
County: CASS HUC: 4050001 Size: 1.6 M
Location: Nieb Concrete settling ponds at Barron Lake Road. NE of Niles
(T7S,R16W,S9 and S16).
Problem: **Fish community rated poor.**
TMDL Year(s): 2003 RF3RchID: 4050001 91 0.00

MENOMINEE RIVER WBID# **080303C**
County: MENOMINEE HUC: 4030108 Size: 85 M
Location: Menominee River from the first dam u/s to the confluence of the Brule
Problem: **FCA-PCBs, mercury; WQS exceedances for PCBs and mercury.**
TMDL Year(s): 2009 2011 RF3RchID: 4030108 1

MENOMINEE RIVER WBID# **080303E**
County: MENOMINEE HUC: 4030108 Size: 1 M
Location: Green Bay confluence u/s 1.0 mile.
Problem: **CSO, pathogens (Rule 100).**
TMDL Year(s): 2009 RF3RchID: 4030108 15

MICHIGAMME RIVER AND IMPOUNDMENTS# WBID# **080307B**
County: IRON HUC: 4030107 Size: 43 M
Location: Menominee River confluence u/s to include the Michigamme River and
Impoundments (Includes Lake Michigamme, Michigamme Reservoir,
Peavy Pond and Michigamme Lake).
Problem: **FCA-mercury.**
TMDL Year(s): 2011 RF3RchID:

MILAKOKIA LAKE WBID# **081201A**
County: MACKINAC HUC: 4060107 Size: 1956 A
Location: W. of Gould City.
Problem: **Mercury Lake.**
TMDL Year(s): 2011 RF3RchID:

MILK RIVER WBID# **061410A**
County: WAYNE/MACOMB HUC: 4090002 Size: 1.3 M
Location: Tributary to Lake St. Clair at the Wayne County/Macomb County line.
Problem: **CSO, pathogen (Rule 100); D.O.; nutrient enrichment; Fish kills.**
TMDL Year(s): 2005 RF3RchID: 4090002 0

MILL CREEK WBID# **061503A**
County: ST. CLAIR HUC: 4090001 Size: 1 M
Location: Village of Yale, T7N,R14E, Sec.1.
Problem: **Untreated sewage discharge, pathogens (Rule 100).**
TMDL Year(s): 2004 RF3RchID: 4090001 1415.00

MILL POND CREEK WBID# **082701V**
County: MUSKEGON HUC: 4060101 Size: 1.5 M
Location: Tributary to White Lake just west of Whitehall.
Problem: **WQS exceedances for triethylene glycol dichloride, bis-2-
chloroethyl ether and tetrachloroethylene.**
TMDL Year(s): 2004 RF3RchID: 4060101 18

MILLECOQUINS LAKE WBID# **081202O**
County: MACKINAC HUC: 4060107 Size: 1062 A
Location: NW of Naubinway.
Problem: **Mercury Lake.**
TMDL Year(s): 2011 RF3RchID:

MONA LAKE WBID# **082701U**
County: MUSKEGON HUC: 4060101 Size: 695 A
Location: Tributary to Lake Michigan.
Problem: **FCA-PCBs, mercury.**
TMDL Year(s): 2009 2011 RF3RchID:

MOORES PARK IMPOUNDMENT (GRAND RIVER) WBID# **082815B**
County: INGHAM HUC: 4050004 Size: 110 A
Location: Lansing u/s of Moores Park Dam on the Grand River. Moores Park Dam
u/s to Waverly Road.
Problem: **Mercury Lake.**
TMDL Year(s): 2011 RF3RchID:

MORRISON LAKE WBID# **082810E**
County: IONIA HUC: 4050006 Size: 330 A
Location: S. of Rt. 96 due S. of Saranac.
Problem: **FCA-PCBs.**
TMDL Year(s): 2010 RF3RchID:

MULLETT LAKE WBID# **211305Y**
County: CHEBOYGAN HUC: 4070004 Size: 17360 A
Location: S. of Cheboygan.and E. of Burt Lake.
Problem: **Mercury Lake.**
TMDL Year(s): 2011 RF3RchID:

MUSKEGON LAKE AND MUSKEGON RIVER# WBID# **082701B**
County: MUSKEGON/NEWAYGO HUC: 4060102 Size: 40 M
Location: Lake Michigan confluence u/s to Croton Dam (Vicinity of Croton).
Problem: **FCA-PCBs, mercury; WQS exceedances for PCBs and mercury.**
TMDL Year(s): 2008 2011 RF3RchID:

NAWAKWA LAKE WBID# **220303B**
County: ALGER HUC: 4020201 Size: 399 A
Location: N. of Lavender Corners and Rt. 77.
Problem: **Mercury Lake.**
TMDL Year(s): 2011 RF3RchID:

NET RIVER WBID# **080313A**
County: IRON HUC: 4030106 Size: 11 M
Location: Net River including the wide waters. T44N, R34W, Sec. 7 to T46, R34W,
Sec. 24.
Problem: **FCA-mercury.**
TMDL Year(s): 2011 RF3RchID: 4030106 6

NETTIE LAKE WBID# **211201B**
County: PRESQUE ISLE HUC: 4070003 Size: 278 A
Location: SE of Millersburg.
Problem: **Mercury Lake.**
TMDL Year(s): 2011 RF3RchID:

NORTON CREEK WBID# **061206M**
County: OAKLAND HUC: 4090005 Size: 0.9 M
Location: Pontiac Trail d/s of West Maple Road to confluence with the next tributary
entering Norton Creek from the west. T2N,R8E,S31; Lat: 42.5314, Long:
83.5478.
Problem: **Fish and macroinvertebrate communities rated poor.**
TMDL Year(s): 2009 RF3RchID: 4090005 21

ORCHARD LAKE WBID# **061406G**
County: OAKLAND HUC: 4090003 Size: 788 A
Location: Vicinity of Orchard Lake.
Problem: **Mercury Lake.**
TMDL Year(s): 2011 RF3RchID:

OSMUN LAKE WBID# **061405L**
County: OAKLAND HUC: 4090003 Size: 15 A
Location: U/s of Terry Lake in the vicinity of Pontiac and part of the Upper Silver
Lake drainage into the headwaters of the Clinton River.
Problem: **FCA-PCBs.**
TMDL Year(s): 2010 RF3RchID:

OTTAWA LAKE WBID# **080318B**
County: IRON HUC: 4030106 Size: 551 A
Location: West of Iron River.
Problem: **Mercury Lake.**
TMDL Year(s): 2011 RF3RchID:

OTTAWA RIVER WBID# **060101C**
County: MONROE HUC: 4100001 Size: 1 M
Location: N. Maumee Bay confluence u/s to the Michigan/Ohio border.
Problem: **FCA-PCBs; WQS exceedances for the pesticides lindane (a-BHC)
and aldrin.**
TMDL Year(s): 2007 RF3RchID: 4100001 10

OTTER LAKE WBID# **220805A**
County: HOUGHTON HUC: 4020104 Size: 890 A
Location: Vicinity of Askel.
Problem: **Mercury Lake.**
TMDL Year(s): 2011 RF3RchID:

OX CREEK WBID# **083202H**
County: BERRIEN HUC: 4050001 Size: 3.5 M
Location: Paw Paw River confluence u/s to Napier Avenue, vicinity of Benton Harbor.
Problem: **Macroinvertebrate community rated poor.**
TMDL Year(s): 2008 RF3RchID: 4050001 94 0.00

PAINT CREEK WBID# **061201D**
County: WASHTENAW HUC: 4100001 Size: 4.6 M
Location: R6E, T3S, Sec. 12 at Ypsilanti, stations are located just above and just
below the retention basin 1600 feet S. of I-94.
Problem: **D.O.; Fish kills; Pathogens (Rule 100).**
TMDL Year(s): 2005 RF3RchID: 4100001 18

PAINT RIVER WBID# **080315D**
County: IRON HUC: 4030106 Size: 0.5 M
Location: Vicinity of Crystal Falls.
Problem: **CSO, pathogens (Rule 100).**
TMDL Year(s): 2009 RF3RchID: 4030106 2

PAINT RIVER POND WBID# **080315C**
County: IRON HUC: 4030106 Size: 455 A
Location: Paint River and Brule River Confluence into Paint River Pond
Impoundment (AKA the Brule Island Impoundment)
Problem: **FCA-mercury.**
TMDL Year(s): 2011 RF3RchID:

PEET CREEK WBID# **082821F**
County: CLINTON HUC: 4050005 Size: 6 M
Location: U/s Anderson RdT8N, R4W (Lebanon, Dallas and Essex Twps.)
Problem: **Nutrient enrichment, nuisance plant growths.**
TMDL Year(s): 2009 RF3RchID: 4050005 20

PERCH LAKE WBID# **220804Z**
County: IRON HUC: 4020104 Size: 994 A
Location: N. of Iron River.
Problem: **Mercury Lake.**
TMDL Year(s): 2011 RF3RchID:

PERCH LAKE WBID# **080308B**
County: MARQUETTE HUC: 4030107 Size: 47 A
Location: SE of Republic.
Problem: **Mercury Lake.**
TMDL Year(s): 2011 RF3RchID:

PERE MARQUETTE RIVER AND PERE MARQUETTE WBID# **082101E**
County: MASON/LAKE HUC: 4060101 Size: 24.5 M
Location: Lake Michigan confluence u/s to 1 mile u/s of Scottville Road.
Problem: **FCA-PCBs, mercury; WQS exceedances for PCBs and mercury.**
TMDL Year(s): 2008 2011 RF3RchID:

PICKEREL LAKE WBID# **211308A**
County: EMMET HUC: 4070004 Size: 1080 A
Location: SE of Alanson.
Problem: **Mercury Lake.**
TMDL Year(s): 2011 RF3RchID:

PIGEON RIVER WBID# **082901R**
County: OTTAWA HUC: 4050002 Size: 10 M
Location: Olive Twp. d/s to the inlet to Pigeon Lake in Port Sheldon Twp.
Problem: **Fish and macroinvertebrate communities rated poor; Nutrient enrichment, nuisance algae growths.**
TMDL Year(s): 2007 RF3RchID: 4050002 20

PIKE LAKE WBID# **220301B**
County: LUCE HUC: 4020201 Size: 292 A
Location: NE of Pine Stump Junction.
Problem: **Mercury Lake.**
TMDL Year(s): 2011 RF3RchID:

PINE CREEK WBID# **082821L**
County: GRATIOT HUC: 4080202 Size: 9 M
Location: SW of Ithaca. Grant Road u/s to 0.8 miles u/s of St. Charles Road.
Problem: **Nutrient enrichment, nuisance plant growths.**
TMDL Year(s): 2007 RF3RchID: 4080202 25

PINE LAKE			WBID# 083004H
County: BARRY	HUC: 4050003	Size:	660 A
Location: Vicinity of Praireville.			
Problem: Mercury Lake.			
TMDL Year(s): 2011		RF3RchID:	
PINE LAKE			WBID# 081904K
County: MANISTEE	HUC: 4060103	Size:	156 A
Location: SW of Wellston.			
Problem: Mercury Lake.			
TMDL Year(s): 2011		RF3RchID:	
PINE RIVER			WBID# 061502F
County: ST. CLAIR	HUC: 4090001	Size:	27 M
Location: St. Clair River confluence u/s to I-69.			
Problem: FCA-PCBs.			
TMDL Year(s): 2010		RF3RchID:	4090001 15 0.00
PINE RIVER AND ST. LOUIS IMPOUNDMENT#			WBID# 210421A
County: MIDLAND/GRATIOT	HUC: 4080202	Size:	36 M
Location: Chippewa River confluence u/s to include St. Louis Impoundment at St.			
Problem: Nutrient enrichment, nuisance algal growths.			
TMDL Year(s): 2004		RF3RchID:	
PLANTER CREEK			WBID# 221404B
County: GOGEBIC	HUC: 4020101	Size:	0.5 M
Location: Due N. of Wakefield.			
Problem: CSO, pathogens (Rule 100).			
TMDL Year(s): 2010		RF3RchID:	4020101 919 0.00
PLASTER CREEK			WBID# 082806H
County: KENT	HUC: 4050006	Size:	12 M
Location: Grand River confluence u/s to Dutton Park (Hanna Lake Avenue and 76th Street).			
Problem: Fish and macroinvertebrate communities rated poor; Pathogens (Rule 100).			
TMDL Year(s): 2002		RF3RchID:	4050006 10
POMEROY LAKE			WBID# 221402Z
County: GOGEBIC	HUC: 4020101	Size:	314 A
Location: SE of Marenisco E. of Rt 525.			
Problem: Mercury Lake.			
TMDL Year(s): 2011		RF3RchID:	
PONTIAC LAKE			WBID# 061206G
County: OAKLAND	HUC: 4090005	Size:	585 A
Location: NW. of Pontiac in the headwaters of the Huron River.			
Problem: FCA-PCBs.			
TMDL Year(s): 2010		RF3RchID:	
PORTAGE CREEK			WBID# 061205V
County: INGHAM	HUC: 4090005	Size:	3 M
Location: Shepper Rd. u/s to City of Stockbridge.			
Problem: Fish and macroinvertebrate communities rated poor.			
TMDL Year(s): 2008		RF3RchID:	4090005 0

PORTAGE LAKE WBID# **082816Q**
County: JACKSON HUC: 4050004 Size: 360 A
Location: NE of Jackson.
Problem: **Mercury Lake.**
TMDL Year(s): 2011 RF3RchID:

PORTAGE LAKE WBID# **221001B**
County: HOUGHTON HUC: 4020103 Size: 10970 A
Location: Vicinity of Houghton and Hancock.
Problem: **FCA-PCBs; Mercury Lake.**
TMDL Year(s): 2010 2011 RF3RchID:

PORTAGE LAKE WBID# **081802B**
County: MANISTEE HUC: 4060104 Size: 2164 A
Location: Vicinity of Onekama.
Problem: **FCA-PCBs.**
TMDL Year(s): 2010 RF3RchID:

PORTAL CREEK WBID# **221303C**
County: ONTONAGON HUC: 4020101 Size: 1 M
Location: Mineral River confluence u/s.
Problem: **Macroinvertebrate community rated poor.**
TMDL Year(s): 2010 RF3RchID: 4020101 724 0.00

POTTERS LAKE WBID# **210413F**
County: LAPEER HUC: 4080204 Size: 160 A
Location: Vicinity of Elba Twp.
Problem: **Untreated sewage discharge, pathogens (Rule 100).**
TMDL Year(s): 2004 RF3RchID:

PRATVILLE DRAIN & LIME LAKE WBID# **060102B**
County: HILLSDALE HUC: 4100006 Size: 0.5 M
Location: Wright Township
Problem: **Untreated sewage discharge, pathogens (Rule 100).**
TMDL Year(s): 2003 RF3RchID: 4100006 236

RABBIT RIVER WBID# **083002C**
County: ALLEGAN HUC: 4050003 Size: 3 M
Location: Green Lake Creek confluence u/s to 7th Street in the vicinity of Wayland.
Problem: **Macroinvertebrate community rated poor; WQS exceedance of pesticide endosulphan.**
TMDL Year(s): 2005 RF3RchID: 4050003 956 0.00

RAINBOW LAKE WBID# **082807K**
County: MONTCALM HUC: 4050006 Size: 155 A
Location: E. of Trufant.
Problem: **Mercury Lake.**
TMDL Year(s): 2011 RF3RchID:

RANDALL LAKE (NORTH LAKE AND CEMETERY LAKE CHAIN) WBID# **083216H**
County: BRANCH HUC: 4050001 Size: 513 A
Location: Vicinity N.W. of Coldwater.
Problem: **FCA-PCBs, mercury.**
TMDL Year(s): 2010 2011 RF3RchID:

RED CEDAR RIVER WBID# **082818H**
County: INGHAM HUC: 4050004 Size: 1 M
Location: Harris Road u/s 1.0 mile.
Problem: **Pathogens (Rule 100); Fish and macroinvertebrate communities rated poor.**
TMDL Year(s): 2011 RF3RchID: 4050004

RED RUN WBID# **083002D**
County: ALLEGAN HUC: 4050003 Size: 8 M
Location: Little Rabbit River confluence u/s (entire stretch of Red Run).
Problem: **Fish and macroinvertebrate community rated poor; WQS exceedances for D.O.**
TMDL Year(s): 2007 RF3RchID: 4050003 45 5.80

RED RUN DRAIN WBID# **061402A**
County: MACOMB HUC: 4090003 Size: 6 M
Location: Clinton River confluence u/s including all tributaries to Warren, Center Line, Madison Heights, Troy and Clawson.
Problem: **CSO, pathogens (Rule 100); Macroinvertebrate community rated**
TMDL Year(s): 2006 RF3RchID: 4090003 10 0.00

REEDS LAKE WBID# **082806E**
County: KENT HUC: 4050006 Size: 265 A
Location: Vicinity of E. Grand Rapids.
Problem: **FCA-PCBs; Mercury Lake.**
TMDL Year(s): 2010 2011 RF3RchID:

RICE CREEK WBID# **083008A**
County: CALHOUN HUC: 4050003 Size: 0.3 M
Location: 22 1/2 Mile Road u/s for 0.25 miles.
Problem: **Macroinvertebrate community rated poor.**
TMDL Year(s): 2011 RF3RchID: 4050003 31 6.68

RICE LAKE WBID# **221001AC**
County: HOUGHTON HUC: 4020103 Size: 675 A
Location: SW of Traverse Bay on Keweenaw Peninsula.
Problem: **Mercury Lake.**
TMDL Year(s): 2011 RF3RchID:

RIFLE RIVER WBID# **210602A**
County: ARENAC HUC: 4080101 Size: 8 M
Location: Saginaw Bay confluence u/s to 1 mile u/s of U.S. Rt. 23 (Vicinity of
Problem: **FCA-PCBs; WQS exceedances for mercury.**
TMDL Year(s): 2010 2011 RF3RchID: 4080101 24 0.03

RIO GRANDE CREEK WBID# **082803F**
County: OTTAWA HUC: 4050006 Size: 0.5 M
Location: Crockery Creek confluence u/s to Chester Twp.
Problem: **Untreated sewage discharge, pathogens (Rule 100).**
TMDL Year(s): 2003 RF3RchID: 4050006 60

RIVER RAISIN WBID# **061101P**
County: LENAWEЕ HUC: 4100002 Size: 8 M
Location: City of Tecumseh u/s to the vicinity of the City of Clinton.
Problem: **Untreated sewage discharge, pathogens (Rule 100).**
TMDL Year(s): 2002 RF3RchID: 4100002 11

RIVER RAISIN WBID# **061101F**
County: MONROE HUC: 4100002 Size: 25 M
Location: Lake Erie confluence u/s to U.S. Rt.-23 (Vicinity of Dundee).
Problem: **FCA-PCBs.**
TMDL Year(s): 2005 RF3RchID: 4100002 1

RIVER RAISIN WBID# **061101G**
County: MONROE HUC: 4100002 Size: 1 M
Location: Dundee d/s 1 mile.
Problem: **WQS exceedances for pesticides; Pathogens (Rule 100).**
TMDL Year(s): 2005 2005 RF3RchID: 4100002 9

RIVER RAISIN WBID# **061101H**
County: MONROE HUC: 4100002 Size: 1 M
Location: ERA dock near mouth, Monroe u/s for 1 mile. STORET #580046
Problem: **WQS exceedances for mercury.**
TMDL Year(s): 2011 RF3RchID: 4100002 1

RIVER RAISIN WBID# **061101E**
County: LENAWEЕ HUC: 4100002 Size: 16 M
Location: Lenawee County line (vicinity of Deerfield) u/s to Blissfield.
Problem: **CSO, pathogens (Rule 100).**
TMDL Year(s): 2005 RF3RchID: 4100002 11

RIVER RAISIN, S. BR. WBID# **061102B**
County: LENAWEЕ HUC: 4100002 Size: 10 M
Location: River Raisin confluence u/s to Carlton Road, vicinity of Adrian.
Problem: **FCA-PCBs.**
TMDL Year(s): 2010 RF3RchID: 4100002 16 0.00

RIVER RAISIN, S. BR. WBID# **061102A**
County: LENAWEЕ HUC: 4100002 Size: 4 M
Location: River Raisin confluence u/s to the vicinity of the Adrian WWTP.
Problem: **CSO, pathogens (Rule 100); chlorides, TDS; turbidity, siltation.**
TMDL Year(s): 2008 RF3RchID: 4100002 16 0.00

RIVER ROUGE WBID# **061305H**
County: WAYNE HUC: 4090004 Size: 1 M
Location: Vicinity of W. Jefferson Avenue. STORET # 820070
Problem: **WQS exceedances for mercury.**
TMDL Year(s): 2011 RF3RchID: 4090004 14 0.00

RIVER ROUGE (MAIN BR.); UPPER BR.; AND LOWER WBID# **061302A**
County: OAKLAND/WAYNE HUC: 4090004 Size: 70 M
Location: Detroit River confluence u/s (Main Br. River Rouge u/s to Rt. 75 in the vicinity of Troy; the Upper Br. River Rouge (confl. To Rt. 696) and Lower River Rouge (confl. u/s).
Problem: **FCA-PCBs.**
TMDL Year(s): 2008 RF3RchID: 4090004 14 0.00

RIVER ROUGE (MAIN BR.); UPPER BR.; MIDDLE BR.; LOWER BR.; BELL BR.; FRANKLIN BR.; EVANS DITCH WBID# **061305G**
County: OAKLAND/WAYNE HUC: 4090004 Size: 91 M
Location: Detroit River confluence u/s (Main River Rouge (u/s to Big Beaver Road); Upper River Rouge (u/s to Rt. 696); Middle Br. River Rouge (u/s to 8 Mile Rd.); Lower Br. (u/s to Beck Road); Bell Br. (u/s to 7 Mile Rd.; Evans Ditch (u/s to Lahser Rd.) ; and the Franklin Br. (u/s to Big Beaver Rd.)
Problem: **Fish and macroinvertebrate communities rated poor; Pathogens; WQS exceedances for D.O.**
TMDL Year(s): 2007 RF3RchID: 4090004 15

ROUND LAKE WBID# **080902B**
County: DELTA HUC: 4030112 Size: 455 A
Location: West of Uno in the Hiawatha National Forest.
Problem: **Mercury Lake.**
TMDL Year(s): 2011 RF3RchID:

ROUND LAKE WBID# **080308D**
County: MARQUETTE HUC: 4030110 Size: 38 A
Location: Located 2.5 miles north of Champion and within the Michigamme State Forest R29W, T48N, Sec. 16
Problem: **FCA-mercury.**
TMDL Year(s): 2011 RF3RchID:

RUDDIMAN CREEK WBID# **082701D**
County: MUSKEGON HUC: 4060102 Size: 1.5 M
Location: Muskegon Lake confluence u/s.
Problem: **Fish and macroinvertebrate communities rated poor; Pathogens (Rule 100).**
TMDL Year(s): 2008 RF3RchID: 4060102 3

RUNKLE LAKE WBID# **080315B**
County: IRON HUC: 4030106 Size: 76 A
Location: East of Crystal Falls.
Problem: **Mercury Lake.**
TMDL Year(s): 2011 RF3RchID:

RYERSON CREEK WBID# **082701Q**
County: MUSKEGON HUC: 4060102 Size: 2.5 M
Location: Tributary to Muskegon Lake
Problem: **Fish and macroinvertebrate communities rated poor.**
TMDL Year(s): 2008 RF3RchID: 4060102 4

SAGINAW BAY (LAKE HURON) WBID# **210400A**
County: BAY HUC: 4080300 Size: 1143 MI2
Location: Saginaw River mouth extending out some 53 miles to Lake Huron between Port Austin and Tawas Point.
Problem: **FCA-PCBs, dioxins, mercury.**
TMDL Year(s): 2010 2011 RF3RchID:

SAGINAW RIVER WBID# **210401B**
County: BAY HUC: 4080206 Size: 1 M
Location: Main St., (Essexville) STORET #090177. Off boat launch site north Woodside Avenue.
Problem: **WQS exceedances for mercury.**
TMDL Year(s): 2011 RF3RchID: 4080206 1

SAGINAW/CASS/TITTABAWASSEE RIVERS# WBID# **210402I**
County: SAGINAW/MIDLAND/BAY HUC: 4080206 Size: 54 M
Location: Saginaw R. d/s to Saginaw Bay.; Cass R.(d/s Bridgeport to Shiawassee R.); Tittabawassee R. (Midland d/s to Saginaw R.)
Problem: **FCA-TCDD (dioxin).**
TMDL Year(s): 2009 RF3RchID:

SALINE RIVER WBID# **061104A**
County: WASHTENAW HUC: 4100002 Size: 1 M
Location: Near Mooreville, Sec. 28, York Twp.
Problem: **Untreated sewage discharge, pathogens (Rule 100).**
TMDL Year(s): 2002 RF3RchID: 4100002 2

SALT RIVER WBID# **061409D**
County: MACOMB HUC: 4090002 Size: 10 M
Location: S. of New Baltimore extending from Anchor Bay confluence u/s to 29 Mile
Problem: **Pathogens (Rule 100).**
TMDL Year(s): 2005 RF3RchID: 4090002 281 0.00

SAND CREEK WBID# **082801G**
County: OTTAWA HUC: 4050006 Size: 16 M
Location: Chester Twp. (T9N, R13W, Sec. 34) Wilson Road d/s to confluence with Grand River, Tallmadge Twp. (T7N, R13W, Sec. 33). Just west of Kent
Problem: **Fish community rated poor.**
TMDL Year(s): 2006 RF3RchID: 4050006 35

SANDY CREEK WBID# **061201E**
County: MONROE HUC: 4100001 Size: 4 M
Location: Sandy Creek d/s of Reinhardt Road to mouth.
Problem: **Fish and macroinvertebrate communities rated poor.**
TMDL Year(s): 2005 RF3RchID: 4100001 467 0.17

SANFORD LAKE (TITTABAWASSEE RIVER) WBID# **210426X**
County: MIDLAND HUC: 4080201 Size: 1250 A
Location: NW of Midland at Sanford.
Problem: **Mercury Lake.**
TMDL Year(s): 2011 RF3RchID:

SAWYER CREEK WBID# **083301E**
County: BERRIEN HUC: 4040001 Size: 1.6 M
Location: Vicinity of Sawyer W. of I-94 (Trib. to Lake Michigan west of Galien River system).
Problem: **Oil.**
TMDL Year(s): 2009 RF3RchID: 4040001 406 0.00

SCALES CR./KEARSARGE CR.# WBID# **221001P**
County: HOUGHTON HUC: 4020103 Size: 1.75 M
Location: Valley Road u/s.
Problem: **WQS exceedances for copper; Macroinvertebrate community rated**
TMDL Year(s): 2008 RF3RchID:

SCHWEITZER RESERVOIR (ESCANABA RIVER) WBID# **080605C**
County: MARQUETTE HUC: 4030110 Size: 260 A
Location: Impoundment of Schweitzer Creek.
Problem: **Mercury Lake.**
TMDL Year(s): 2011 RF3RchID:

SEBAWAING RIVER WBID# **210301E**
County: HURON HUC: 4080103 Size: 2 M
Location: Vicinity of Sebawaing.
Problem: **FCA-PCBs.**
TMDL Year(s): 2009 RF3RchID: 40801031026

SECOND SISTER LAKE WBID# **061205C**
County: WASHTENAW HUC: 4090005 Size: 8 A
Location: West side of Ann Arbor.
Problem: **Mercury Lake.**
TMDL Year(s): 2011 RF3RchID:

SELKIRK LAKE WBID# **083002A**
County: ALLEGAN HUC: 4050003 Size: 94 A
Location: Vicinity of Shelbyville
Problem: **FCA-mercury.**
TMDL Year(s): 2011 RF3RchID:

SHIAWASSEE RIVER WBID# **210415A**
County: SAGINAW HUC: 4080203 Size: 1 M
Location: Fergus Rd., St. Charles Twp. STORET #730023. Reach extends 0.5 mile
u/s and d/s (1 mile).
Problem: **WQS exceedance for mercury.**
TMDL Year(s): 2011 RF3RchID: 4080203 932.00

SHIAWASSEE RIVER WBID# **210415B**
County: SAGINAW HUC: 4080203 Size: 0.5 M
Location: Vicinity of Oakley d/s.
Problem: **Untreated sewage discharge, pathogens (Rule 100).**
TMDL Year(s): 2003 RF3RchID: 4080203 9

SHIAWASSEE RIVER AND S. BR. SHIAWASSEE RIVER WBID# **210417A**
County: SHIAWASSEE HUC: 4080203 Size: 107 M
Location: Saginaw River confluence u/s to Byron Millpond, thence, the S. Br.
Shiawassee River from Byron u/s to M-59 (vicinity of Howell).
Problem: **FCA-PCBs.**
TMDL Year(s): 2002 RF3RchID: 4080203 1

SHIAWASSEE RIVER, S. BR. WBID# **210417C**
County: LIVINGSTON HUC: 4080203 Size: 6 M
Location: Route M-59 u/s to Pinckney Road.
Problem: **Fish community rated poor.**
TMDL Year(s): 2007 RF3RchID: 4080203 20

SHIAWASSEE RIVER, S. BR. AND MARION GENOA WBID# **210417E**
County: LIVINGSTON HUC: 4080203 Size: 3 M
Location: S. Br. Shiawassee River at Mason Rd. u/s to Marion and Genoa Drain
confluence at Norton Rd, thence u/s to stormwater discharge pipe in the
vicinity of the Howell WWTP's Outfall 001.
Problem: **Macroinvertebrate community rated poor; WQS exceedances for
hexavalent chromium.**
TMDL Year(s): 2007 RF3RchID: 4080203

SILVER LAKE INLET WBID# **083102G**
 County: VAN BUREN HUC: 4050002 Size: 0.5 M
 Location: Silver Lake near Grand Junction, Michigan.
 Problem: **WQS exceedance for pesticide simazine; Macroinvertebrate community rated poor.**
TMDL Year(s): 2008 RF3RchID: 4050002 326

SISKIWIT LAKE (ISLE ROYALE) WBID# **220101H**
 County: KEWEENAW HUC: 4020300 Size: 3965 A
 Location: Isle Royale.
 Problem: **FCA-PCBs; Mercury Lake.**
TMDL Year(s): 2010 2011 RF3RchID:

SIX MILE LAKE WBID# **221101I**
 County: ONTONAGON/HOUGHTON HUC: 4020103 Size: 73 A
 Location: W. of Nisula.
 Problem: **Mercury Lake.**
TMDL Year(s): 2011 RF3RchID:

SMALL CREEK & HUNTERS LAKE WBID# **210806B**
 County: ALCONA HUC: 4070007 Size: 0.5 M
 Location: Vicinity of Curtis Twp.(Glennie).
 Problem: **Untreated sewage discharge, pathogens (Rule 100).**
TMDL Year(s): 2004 RF3RchID: 4070007 10

SMITH'S CREEK WBID# **061502B**
 County: ST. CLAIR HUC: 4090001 Size: 3 M
 Location: Vicinity of Smith's Creek (drains to Pine River).
 Problem: **CSO, pathogens (Rule 100), Macroinvertebrate community poor.**
TMDL Year(s): 2009 RF3RchID: 4090001 32 0.00

SOUTH LAKE WBID# **061205M**
 County: WASHTENAW HUC: 4090005 Size: 197 A
 Location: N. of Lyndon Center.
 Problem: **Mercury Lake.**
TMDL Year(s): 2011 RF3RchID:

SPAULDING CREEK WBID# **082820C**
 County: CLINTON HUC: 4050005 Size: 7 M
 Location: Tributary to Stony Creek; Grove Road u/s to its headwaters.
 Problem: **Nutrient enrichment, nuisance algal growths.**
TMDL Year(s): 2004 RF3RchID: 4050005 6

ST. CLAIR RIVER WBID# **061502A**
 County: ST. CLAIR HUC: 4090001 Size: 30 M
 Location: Algonac u/s to the Black River confluence at Port Huron
 Problem: **FCA-PCBs, mercury; CSO, pathogens (Rule 100).**
TMDL Year(s): 2010 2011 2009 RF3RchID: 4090001 1

ST. JOSEPH RIVER WBID# **083204G**
 County: BERRIEN HUC: 4050001 Size: 32 M
 Location: Lake Michigan confluence in Morrison Channel u/s to Michigan/Indiana state line.
 Problem: **CSO, pathogens (Rule 100).**
TMDL Year(s): 2003 RF3RchID: 4050001 2

ST. JOSEPH RIVER WBID# **083204H**
County: BERRIEN AND ST. JOSEPH HUC: 4050001 Size: 83 M
Location: Lake Michigan confluence u/s to Indiana/Michigan state line and
Indiana/Michigan state line u/s to Sturgis dam vicinity of Three Rivers.
(Includes Lake Chapin and Constantine Impoundment).
Problem: **FCA-PCBs; WQS exceedances for PCB.**
TMDL Year(s): 2009 RF3RchID: 4050001 1

ST. JOSEPH RIVER WBID# **083204I**
County: BERRIEN HUC: 4050001 Size: 1 M
Location: At gaging station downstream of BL-94 located in the navigational channel
east of Lake Michigan at Benton Harbor.
Problem: **WQS exceedances for mercury.**
TMDL Year(s): 2011 RF3RchID: 4050001 406

ST. LOUIS CREEK WBID# **221001N**
County: HOUGHTON HUC: 4020103 Size: 0.5 M
Location: From the First Street CSO d/s approximately 1/2 mile. (88 25' 59, 47 14'
Problem: **CSO, pathogens (Rule 100), bacterial slimes.**
TMDL Year(s): 2008 RF3RchID: 4020103 296

ST. MARYS RIVER WBID# **211701E**
County: CHIPPEWA HUC: 4070001 Size: 50 M
Location: St. Mary's River system, from Sault Ste. Marie to east side of Drummond
Problem: **FCA-PCBs, mercury.**
TMDL Year(s): 2009 2011 RF3RchID: 4070001 4

ST. MARYS RIVER WBID# **211701A**
County: CHIPPEWA HUC: 4070001 Size: 0.02 M
Location: At Sault Ste. Marie.
Problem: **CSO, pathogens (Rule 100).**
TMDL Year(s): 2012 RF3RchID: 4070001 4

STEGEMAN CREEK WBID# **082804I**
County: KENT HUC: 4050006 Size: 4.5 M
Location: N. of Rockford and tributary to the Rouge River. Rector Road in Algoma
Twp., Sec. 23 u/s to Courtland Twp., Sec. 16.
Problem: **Macroinvertebrate community rated poor.**
TMDL Year(s): 2006 RF3RchID: 4050006 67

STONY CREEK IMPOUNDMENT (STONY CREEK) WBID# **061407B**
County: MACOMB HUC: 4090003 Size: 700 A
Location: Stony Creek Metropolitan Park , S.W. of Romeo.
Problem: **FCA-PCBs, mercury.**
TMDL Year(s): 2009 2011 RF3RchID:

STOVER CREEK WBID# **081401B**
County: CHARLEVOIX HUC: 4060105 Size: 4 M
Location: Lake Charlevoix confluence u/s.
Problem: **Macroinvertebrate community rated poor.**
TMDL Year(s): 2008 RF3RchID: 4060105 851 0.00

STRAWBERRY CREEK WBID# **082805G**
County: KENT HUC: 4050006 Size: 3 M
Location: Mill Creek confluence to 2 miles u/s (Alpine Twp. T8N, R12W, Sec. 25.
NW of Grand Rapids.
Problem: **Fish community rated poor.**
TMDL Year(s): 2006 RF3RchID: 4050006 839

SUNSET LAKE WBID# **080317X**
County: IRON HUC: 4030106 Size: 545 A
Location: NE of Iron River.
Problem: **Mercury Lake.**
TMDL Year(s): 2011 RF3RchID:

SWIFT RUN CREEK WBID# **061203L**
County: WASHTENAW HUC: 4090005 Size: 3.7 M
Location: SE Ann Arbor: Huron River confluence u/s to Ellsworth Road.
Problem: **Macroinvertebrate community rated poor.**
TMDL Year(s): 2004 RF3RchID: 4090005 25

TAHQUAMENON RIVER WBID# **220201E**
County: CHIPPEWA HUC: 4020202 Size: 1 M
Location: 1 mile reach from Lake Superior confluence u/s. Sampling site: STORET
170141 off trail through Tahquamenon Falls State Park.
Problem: **WQS exceedances for PCBs.**
TMDL Year(s): 2010 RF3RchID: 4020202 1

TAWAS RIVER WBID# **210703C**
County: IOSCO HUC: 4080101 Size: 2 M
Location: Lake Huron confluence u/s to Tawas Lake.
Problem: **FCA-PCBs.**
TMDL Year(s): 2010 RF3RchID: 4080101 7

TERRY LAKE WBID# **061405K**
County: OAKLAND HUC: 4090003 Size: 8 A
Location: NW side of Pontiac. Located between Osmun and Harris Lakes.
Problem: **FCA-PCBs.**
TMDL Year(s): 2010 RF3RchID:

THOMPSON LAKE WBID# **210417B**
County: LIVINGSTON HUC: 4080203 Size: 262 A
Location: Thompson Lake near Howell (Sections 25 and 36, T3N,R4E and Sections
30 and 31, T3N,R5E) entire lake.
Problem: **FCA-PCBs.**
TMDL Year(s): 2009 RF3RchID:

THOUSAND ISLAND LAKE WBID# **221205G**
County: GOGEBIC HUC: 4020102 Size: 1020 A
Location: S.W. of Watersmeet.
Problem: **Mercury Lake.**
TMDL Year(s): 2011 RF3RchID:

THREAD CREEK AND THREAD LAKE WBID# **210414U**
County: GENESEE HUC: 4080204 Size: 26 M
Location: Genesee/Oakland county line d/s to Thread Lake
Problem: **FCA-PCBs.**
TMDL Year(s): 2005 RF3RchID: 4080204 816.03

THREE MILE CREEK WBID# **210416D**
County: SHIAWASSEE HUC: 4080203 Size: 5 M
Location: Holly Drain confluence u/s to Miller Road. Vicinity of Durand,
Problem: **Fish and macroinvertebrate communities rated poor; Nutrient enrichment, nuisance plant growths.**
TMDL Year(s): **2007** RF3RchID: 4080203 677 0.00

THUNDER BAY AND THUNDER BAY RIVER (LAKE) WBID# **211002P**
County: ALPENA HUC: 4070006 Size: 85 MI2
Location: Thunder Bay area and 1 mile of Thunder Bay River from the bay confluence u/s to the 9th Street Dam (Besser Lake Dam).
Problem: **FCA-PCBs**
TMDL Year(s): **2010** RF3RchID:

TITTABAWASSEE RIVER WBID# **210420D**
County: SAGINAW/MIDLAND HUC: 4080201 Size: 1 M
Location: Saginaw River confluence u/s to the City of Midland's dam.
Problem: **Untreated sewage discharge, pathogens (Rule 100).**
TMDL Year(s): **2009** RF3RchID: 4080201 120.11

TOBICO MARSH (WETLAND) WBID# **210501H**
County: BAY HUC: 4080102 Size: 680 A
Location: NE of Kawkawlin.
Problem: **FCA-PCBs.**
TMDL Year(s): **2009** RF3RchID:

TODD LAKE WBID# **082706B**
County: OSCEOLA HUC: 4060102 Size: 76 A
Location: W. of Slaybaugh Corner.
Problem: **Mercury Lake.**
TMDL Year(s): **2011** RF3RchID:

TONQUISH CREEK, (TRIBUTARY TO MIDDLE RIVER ROUGE) WBID# **061304H**
County: WAYNE HUC: 4090004 Size: 12 M
Location: Middle River Rouge confluence u/s. Vicinity of Nankin Mills.
Problem: **Fish and macroinvertebrate communities rated poor.**
TMDL Year(s): **2007** RF3RchID: 4090004 266 0.00

TORCH LAKE WBID# **081501E**
County: ANTRIM HUC: 4060105 Size: 18770 A
Location: Vicinity of Eastport.
Problem: **FCA-PCBs, chlordane, mercury.**
TMDL Year(s): **2009 2011** RF3RchID:

TORCH LAKE WBID# **221001A**
County: HOUGHTON HUC: 4020103 Size: 2659 A
Location: In the vicinity of the communities of Hubbell and Lake Linden, Michigan.
Problem: **FCA-PCBs, mercury; WQS exceedances for copper; Macroinvertebrate community rated poor.**
TMDL Year(s): **2010 2011 2003** RF3RchID:

TYLER CREEK (BEAR CREEK) WBID# **082811E**
County: IONIA/KENT HUC: 4050007 Size: 11 M
Location: Originates in Ionia Co. (as Bear Cr.) then enters SE corner of Kent Co. (as Tyler Cr.) as a tributary to the Coldwater River-(Ionia Co., Campbell Twp., T5N, R8W, Sec. 4 d/s to Kent Co., Bowne Twp. T5N, R9W, Sec. 35).
Problem: **Macroinvertebrate and fish communities rated poor; Pathogens (Rule 100).**
TMDL Year(s): 2006 RF3RchID: 4050007 27

UNION LAKE WBID# **083210C**
County: BRANCH HUC: 4050001 Size: 525 A
Location: Vicinity of Union City u/s of Dunk Rd. dam.
Problem: **FCA-PCBs.**
TMDL Year(s): 2005 RF3RchID:

UNNAMED DRAINS (METAMORA) WBID# **210413I**
County: LAPEER HUC: 4080204 Size: 1 M
Location: All of Metamora drains eventually flow to S. Br. Flint River.
Problem: **Untreated sewage discharge, pathogens (Rule 100).**
TMDL Year(s): 2004 RF3RchID: 4080204 742 0.00

UNNAMED LAKE WBID# **080309A**
County: BARAGA HUC: 4030107 Size: 52 A
Location: Located at T49N, R31W, Sec. 35. just S.E. of Crooked Lake.
Problem: **FCA-mercury.**
TMDL Year(s): 2011 RF3RchID:

UNNAMED LAKE WBID# **061203E**
County: WASHTENAW HUC: 4090005 Size: 2 A
Location: S. of Ford Lake in the NE corner of Sec. 26, T3S, R7E (Textile Road and Burton Road).
Problem: **FCA-PCBs, mercury.**
TMDL Year(s): 2010 2011 RF3RchID:

UNNAMED TRIBUTARY TO GRAND RIVER WBID# **082805K**
County: KENT HUC: 4050006 Size: 1 M
Location: Off Grand River Drive and S. of Hordyk Road, E. side of Grand Rapids. Plainfield Twp. Sec. 36.
Problem: **Fish community rated poor.**
TMDL Year(s): 2006 RF3RchID: 40500061133

UNNAMED TRIBUTARY TO POTERFIELD CREEK WBID# **080302D**
County: MENOMINEE HUC: 4030108 Size: 1 M
Location: A drainage running from north to south off the Berger Cattle Ranch (northwest of Bagley, MI) T37N, R27W, Sec. 25, 36.
Problem: **Nutrient enrichment, nuisance algal growth.**
TMDL Year(s): 2009 RF3RchID: 4030108 0

VAN ETEN CREEK WBID# **210806I**
County: ALCONA HUC: 4070007 Size: 14.7 M
Location: Confluence of Pine River u/s to M-72.
Problem: **Macroinvertebrate community rated poor; Nutrient enrichment.**
TMDL Year(s): 2009 RF3RchID: 4070007 66

VAN ETTEN LAKE WBID# **210806Z**
County: IOSCO HUC: 4070007 Size: 1320 A
Location: NE of Wurtsmith Air Force Base.
Problem: **FCA-PCBs.**
TMDL Year(s): 2010 RF3RchID:

VANDERCOOK LAKE WBID# **082816R**
County: JACKSON HUC: 4050004 Size: 144 A
Location: Summit twp. (T3S, R1W, Sec. 22/23 and 26/27).
Problem: **Mercury Lake.**
TMDL Year(s): 2011 RF3RchID:

VERMILAC LAKE (WORM LAKE) WBID# **220803B**
County: BARAGA HUC: 4020104 Size: 622 A
Location: E. of Covington.
Problem: **Mercury Lake**
TMDL Year(s): 2011 RF3RchID:

VERMILION CREEK WBID# **082819B**
County: SHIAWASSEE/INGHAM HUC: 4050004 Size: 6.5 M
Location: From Woodbury Road u/s to headwaters at County Line Lake.
Problem: **Untreated sewage discharge, pathogens (Rule 100).**
TMDL Year(s): 2009 RF3RchID: 4050004 23

VICTORIA RESERVOIR (W. BR. ONTONAGON RIVER) WBID# **221203D**
County: ONTONAGON HUC: 4020102 Size: 293 A
Location: SW of Rockland.
Problem: **Mercury Lake.**
TMDL Year(s): 2011 RF3RchID:

WABASIS LAKE WBID# **082807M**
County: KENT HUC: 4050006 Size: 418 A
Location: N. of Grattan.
Problem: **Mercury Lake.**
TMDL Year(s): 2011 RF3RchID:

WAGNER-PINK DRAIN WBID# **061203J**
County: MONROE HUC: 4090005 Size: 0.5 M
Location: Huron River confluence u/s to 0.2 mile u/s of S.Huron River Drive.
Problem: **Macroinvertebrate community rated poor; Pathogens (Rule 100).**
TMDL Year(s): 2005 2003 RF3RchID: 4090005 0

WASKA RIVER, S. BR. OF THE E. BR. WBID#: **211801B**
County: CHIPPEWA HUC: 4020203 Size: 1 M
Location: 7 mile Road u/s to 8 Mile Road; W. of Piche Rd.
Problem: **Macroinvertebrate community rated poor; Pathogens (Rule 100).**
TMDL Year: 2011

WALLED LAKE WBID# **061304D**
County: OAKLAND HUC: 4090004 Size: 670 A
Location: Vicinity of Novi.
Problem: **FCA-PCBs, mercury.**
TMDL Year(s): 2010 2011 RF3RchID:

WAMPLERS LAKE			WBID# 061101R
County: JACKSON/LENAWEE	HUC: 4100002	Size:	780 A
Location: Vicinity of Oak Shade Park.			
Problem: Mercury Lake.			
TMDL Year(s): 2011		RF3RchID:	
WANNADOGA CREEK			WBID# 083006M
County: BARRY	HUC: 4050003	Size:	14 M
Location: Baseline Rd. u/s.			
Problem: Macroinvertebrate community rated poor.			
TMDL Year(s): 2011		RF3RchID:	4050003 37 5.45
WEST BRANCH LAKES			WBID# 081104A
County: ALGER	HUC: 4060106	Size:	52 A
Location: T48N, R14W, Sec. 31.			
Problem: FCA-mercury.			
TMDL Year(s): 2011		RF3RchID:	
WHITE CREEK			WBID# 210405A
County: TUSCOLA	HUC: 4080205	Size:	9 M
Location: Cass River confluence u/s to the confluence of the N. Br. and S. Br. White Creek.			
Problem: Macroinvertebrate community rated poor.			
TMDL Year(s): 2009		RF3RchID:	4080205 8
WHITE LAKE			WBID# 082301A
County: MUSKEGON	HUC: 4060101	Size:	2572 A
Location: Vicinity of Montague and Whitehall.			
Problem: FCA-PCBs, chlordane, mercury.			
TMDL Year(s): 2009 2011		RF3RchID:	
WHITMORE LAKE			WBID# 061205H
County: LIVINGSTON/WASHTENAW	HUC: 4090005	Size:	677 A
Location: Vicinity of Whitmore Lake.			
Problem: FCA-PCBs.			
TMDL Year(s): 2010		RF3RchID:	
YORK CREEK			WBID# 082805I
County: KENT	HUC: 4050006	Size:	3.5 M
Location: Grand River confluence u/s to Chordes Road.			
Problem: Fish community rated poor.			
TMDL Year(s): 2006		RF3RchID:	4050006 832

ATTACHMENT 3

Schedule for TMDL Development

TMDL Year	Waterbody Name	WBID#	TMDL Parameter(s)
2002	Carrier Creek	082812D	Biota
	Deer Creek	083301D	Pathogen
	Galien River	083301A	Pathogen
	Hammell Creek	221001O	Mercury, Copper
	Kawkawlin River	210501F	PCB
	Lenawee County Drain No. 70	061103H	Pathogen
	Plaster Creek	082806H	Biota
	Plaster Creek	082806H	Pathogen
	River Raisin	061101P	Pathogen
	Saline River	061104A	Pathogen
	Shiawassee River and S. Br. Shiawassee River	210417A	PCB
2003	Bean Creek	060102A	Pathogen
	Black Creek	082701J	Biota
	Carp Creek	220601A	Mercury
	Ecorse River	061201I	Biota
	Grand River	082816H	Pathogen
	Grand River	082816H	DO
	Grand River	082816H	Biota
	Little Black Creek	082701T	Biota
	McKinzie Creek	083205H	Biota
	Pratville Drain and Lime Lake	060102B	Pathogen
	Rio Grande Creek	082803F	Pathogen
	Shiawassee River	210415B	Pathogen
	St. Joseph River	083204G	Pathogen
	Torch Lake	221001A	Copper
	Wagner-Pink Drain	061203J	Pathogen
2004	Amos/Palmer Drain	061201C	TDS, Biota
	Belle River	061501G	Biota
	Belle River	061501G	DO, TDS
	Berry Drain	061506A	Biota
	Black Creek	083102C	Biota
	Burdick Drain	210414D	Pathogen
	Cedar River	210429A	Pathogen
	Duff Creek	210406A	Pathogen
	Haven-Max Lake Drain/Great Bear Lake	083102L	Phosphorus
	Letts Creek	061204D	Biota
	Limekiln Lake	061205T	Phosphorus
	Mallets Creek	061203I	Biota
	Mill Creek	061503A	Pathogen
	Mill Pond Creek	082701V	Org Chem
	Pine River	210421A	Phosphorus
Potters Lake	210413F	Pathogen	

TMDL Year	Waterbody Name	WBID#	TMDL Parameter(s)
2004 cont.	Small Creek	210806B	Pathogen
	Spaulding Creek	082820C	Phosphorus
	Swift Run Creek	061203L	Biota
	Unnamed Drains, Metamora	210413I	Pathogen
2005	Black Creek	061103G	Biota
	Bluff Creek	221202A	Biota
	Lake Huron - Burtchville Twp. Park Beach	210101F	Pathogen
	Lake Huron - Keewadhin Road Beach	210101G	Pathogen
	Lake Huron - Lakeport State CG Beach	210101D	Pathogen
	Lake Huron - Metcalf Road Beach	210101E	Pathogen
	Macon Creek	061101C	Biota
	Milk River	061410A	Pathogen
	Paint Creek	061201D	Pathogen
	Paint Creek	061201D	DO
	Paint Creek	061201D	Biota
	Rabbit River	083002C	Biota
	River Raisin	061101G	Pesticides
	River Raisin	061101G	Pathogen
	River Raisin	061101E	Pathogen
	River Raisin	061101F	PCB
	Salt River	061409D	Pathogen
	Sandy Creek	061201E	Biota
	Thread Creek	210414U	PCB
	Union Lake	083210C	PCB
Wagner-Pink Drain	061203J	Biota	
2006	Bass River	082801H	Pathogen
	Bass River	082801H	Biota
	Bear Creek	061402B	Pathogen
	Black River Drain	083102J	Phosphorus
	Buck Creek	082805L	Pathogen
	Butternut Creek	082808F	Biota
	Clinton River	061404A	Biota
	Clinton River	061404C	Pathogen
	Coldwater River	082811F	Pathogen
	Coon Creek	061408C	Pathogen
	Coon Creek	061408C	DO
	Davis Creek	083005V	Oil
	Deer Creek	061408D	Pathogen
	Duke Creek	082804K	Biota
	East Pond Creek	061408G	Pathogen
	Fenner Lake	083004F	Phosphorus
	Furlong Creek	081202B	Biota
	Grand River	082806A	Pathogen
	Kalamazoo River	083005A	PCB
	Lake St. Clair Metropolitan Beach	061403A	Pathogen
	Lake St. Clair Shores Memorial Beach	061403B	Pathogen
	Manistee Lake	081901A	Pathogen

TMDL Year	Waterbody Name	WBID#	TMDL Parameter(s)
2006 cont.	Red Run Drain	061402A	Pathogen
	Sand Creek	082801G	Biota
	Stegeman Creek	082804I	Biota
	Strawberry Creek	082805G	Biota
	Tyler Creek	082811E	Biota
	Tyler Creek	082811E	Pathogen
	Unnamed Tributary to Grand River	082850K	Biota
	York Creek	082805I	Biota
2007	Albrow Creek	082816J	Pathogen
	Bishop Creek	061304O	Biota
	Blakely Drain	061301B	Biota
	Brownstown Creek	061301A	Biota
	Cranberry Creek	210415C	Biota
	Culver Creek	210501A	Biota
	Detroit River	061401A	Pathogen
	Frank and Poet Drain	061301K	Biota
	Honey Creek	061205Q	Biota
	Johnson Creek	061304I	DO
	Kawkawlin River	210501G	DO
	Lake Erie-Luna Pier Beach	060101D	Pathogen
	LaPointe Drain	060101E	DO
	Ottawa River	060101C	PCB
	Pigeon River	082901R	Biota
	Pine Creek	082821L	Phosphorus
	Red Run	083002D	Biota
	Red Run	083002D	DO
	River Rouge	061305G	DO
	River Rouge	061305G	Biota
	River Rouge	061305G	Pathogen
	Shiawassee River	210417C	Biota
Shiawassee River	210417E	Biota	
Three Mile Creek	210416D	Biota	
Tonquish Creek	061304H	Biota	
2008	Adventure Creek	221209G	Biota
	Bear Lake	082701A	Phosphorus
	Cass River	210402F	DO
	Detroit River	061401A	PCB
	Detroit River	061401A	TCDD
	Eagle River	220901D	Biota, Copper
	Farmers Creek	083204E	Pathogen
	Farmers Creek	083204E	Phosphorus
	Grand River	082812B	Pathogen
	Muskegon Lake and Muskegon River	082701B	PCB
	Ox Creek	083202H	Biota

TMDL Year	Waterbody Name	WBID#	TMDL Parameter(s)
2008 cont.	Pere Marquette River	082101E	PCB
	Portage Creek	061205V	Biota
	River Raisin	061102A	Pathogen
	River Raisin	061102A	TDS
	River Rouge	061302A	PCB
	Ruddiman Creek	082701D	Biota
	Ruddiman Creek	082701D	Pathogen
	Ryerson Creek	082701Q	Biota
	Scales Creek/Kearsarge Creek	221001P	Biota, Copper
	Silver Lake Inlet	083102G	Biota
	St. Louis Creek	221001N	Pathogen
	Stover Creek	081401B	Biota
	White Creek	210405A	Biota
	2009	Alder Creek	082821K
Alder Creek		082821K	Biota
Bear Lake		082701A	PCB
Black River		061504A	Pathogen
Cox Drain		082821G	Phosphorus
Cox Drain		082821G	Biota
Duff Creek		210406A	Biota
Galien River		083301G	PCB, Chlordane
Galien River, E. Br.		083301F	Phosphorus
Glen Lake		081702A	PCB, Chlordane
Grand River and Red Cedar River		082801F	PCB
Honey Creek		061205A	Pathogen
Horseshoe Lake Drain		061205R	Biota
Lake Macatawa		082901D	PCB, Chlordane
Lost Creek		082820B	Biota
Lost Creek		082820B	Phosphorus
Maple River		082821D	Phosphorus
Menominee River		080303C	PCB
Menominee River		080303E	Pathogen
Mona Lake		082701U	PCB
Norton Creek		061206M	Biota
Paint River		080315D	Pathogen
Peet Creek		082821F	Phosphorus
Saginaw/Cass/Tittabawassee Rivers		210402I	TCDD (dioxin)
Sawyer Creek		083301E	Oil
Sebewaing River		210301E	PCB
Smith's Creek		061502B	Pathogen
Smith's Creek		061502B	Biota
St. Clair River		061502A	Pathogen
St. Joseph River		083204H	PCB
St. Marys River		211701E	PCB
Stony Creek Impoundment (Stony Creek)		061407B	PCB
Thompson Lake		210417B	PCB
Tittabawassee River		210420D	Pathogen

TMDL Year	Waterbody Name	WBID#	TMDL Parameter(s)
2009 cont.	Tobico Marsh (wetland)	210501H	PCB
	Torch lake	081501E	PCB, Chlordane
	Unnamed Tributary to Poterfield Creek	080302D	Phosphorus
	Van Etten Creek	210806I	Biota
	Vermilion Creek	082819B	Pathogen
	White Creek	210405A	Biota
	White Lake	082301A	PCB, Chlordane
2010	Alma Impoundment (Pine River)	210421G	PCB
	Au Sable River	210801A	PCB
	Barton Lake	083210G	PCB
	Barton Pond (Huron River Impoundment)	061203M	PCB
	Battle Creek River	083006F	PCB
	Black Creek	082701J	PCB
	Black Creek	061101S	PCB
	Boyne River	081403A	PCB
	Caro Impoundment (Cass River)	210403E	PCB
	Cass Lake	061405A	PCB
	Clinton River	061404C	PCB
	Croswell Impoundment (Black River)	061504F	PCB
	Crystal Lake	081801D	PCB
	Dowagiac River	083205J	PCB
	Elk Lake	081501C	PCB
	Escanaba River	080601D	PCB
	Fawn River	083214D	PCB
	Fenner Lake	083004F	PCB
	Flat River	082807A	PCB
	Flint River, Main	210409C	PCB
	Flint River, S. Br.	210413P	Biota
	Ford Lake/Belle Lake (Imp. of Huron R)	061203N	PCB
	Goose Lake	080605D	PCB
	Gull Lake	083005I	PCB
	Hess Lake	082702L	PCB
	Higgins Lake	082713A	PCB, Chlordane
	Holloway Reservoir (Flint River Imp.)	210411X	PCB
	Holly Drain/Three Mile Creek	210416E	Pathogen
	Houghton Lake	082713B	PCB
	Kent Lake	061206R	PCB
	Kids Creek	081601D	Biota
	Lake Orion	061406A	PCB
	Lake St. Clair	061000A	PCB
	Little Rabbit River	083002E	Biota
	Maceday Lake	061406F	PCB
	Manistee Lake	081901A	PCB
	Morrison Lake	082810E	PCB
Osmun Lake	061405L	PCB	
Pine River	061502F	PCB	

TMDL Year	Waterbody Name	WBID#	TMDL Parameter(s)
2010 cont.	Planter Creek	221404B	Pathogen
	Pontiac Lake	061206G	PCB
	Portage Lake	221001B	PCB
	Portage Lake	081802B	PCB
	Portal Creek	221303C	Biota
	Randall Lake	083216H	PCB
	Reeds Lake	082806E	PCB
	Rifle River	210602A	PCB
	River Raisin, S. Br.	061102B	PCB
	Siskiwit Lake (Isle Royale)	220101H	PCB
	St. Clair River	061502A	PCB
	Tahquamenon River	220201E	PCB
	Tawas River	210703C	PCB
	Thunder Bay/Thunder Bay R (Lk Huron)	211002P	PCB
	Torch Lake	221001A	PCB
	Unnamed Lake	061203E	PCB
	Van Etten Lake	210806Z	PCB
	Walled Lake	061304D	PCB
	Whitmore Lake	061205H	PCB
	2011	Alma Impoundment (Pine River)	210421G
Arbutus Lake		081601L	Mercury
Au Sable River		210801A	Mercury
Au Train lake		220402Y	Mercury
Austin Lake		083208C	Mercury
Barton Lake		083210G	Mercury
Bass Lake		081601M	Mercury
Bear Lake		082701A	Mercury
Beatons Lake		221205F	Mercury
Beaufort Lake		080308E	Mercury
Beaver Lake		211001B	Mercury
Big Blue Lake		082301P	Mercury
Bills Lake		082804N	Mercury
Bishop Lake		061206N	Mercury
Bond Falls Flowage		221208C	Mercury
Bond Falls Flowage		221208C	Mercury
Brickyard Creek		083005O	Biota
Burt Lake		211305X	Mercury
Cable Lake		080313B	Mercury
Caribou Lake		211602E	Mercury
Caro Impoundment (Cass River)		210403E	Mercury
Carp Lake (aka Trout Lake)		211401B	Mercury
Cass Lake		061405A	Mercury
Cass River		210402H	Mercury
Chalk Hills Impoundment (Menominee R)		080303B	Mercury
Chaney Lake		221402B	Mercury
Charlotte River		211701I	Biota

TMDL Year	Waterbody Name	WBID#	TMDL Parameter(s)
2011 cont.	Chicagon Lake	080315A	Mercury
	Clark Lake	061101Q	Mercury
	Clear Spring Lake (developed gravel pit)	061405I	Mercury
	Clinton River	061404D	Mercury
	Coldwater Lake	210424Y	Mercury
	Coldwater Lake	083216B	Mercury
	Craig Lake	080308F	Mercury
	Crooked Creek	083007J	Biota
	Crooked Lake	211308X	Mercury
	Croton Pond (Muskegon River)	082702A	Mercury
	Deer Creek	082801K	DO
	Deer Creek	082801K	Biota
	Deer Creek	082801K	Pathogen
	Detroit River	061401A	Mercury
	Duck Lake	221207X	Mercury
	Echo Lake	220401B	Mercury
	Elk Lake	081501C	Mercury
	Ellsworth Lake	081503I	Mercury
	Escanaba River	080601D	Mercury
	Fenner Lake	083004F	Mercury
	Fenton lake	210416X	Mercury
	Fish Lake	083004P	Mercury
	Five Lakes	210427Y	Mercury
	Forestville Basin (Dead River)	220602A	Mercury
	Fortune Lake (Second Lake)	080315E	Mercury
	Four Mile Lake	061204F	Mercury
	Fumee Lake	080304C	Mercury
	Glen Lake	081702A	Mercury
	Goose Lake	080605D	Mercury
	Grand River	082801J	Mercury
	Grand River and Red Cedar River	082815D	Pathogen
	Grand River and Red Cedar River	082815D	DO
	Grand Sable Lake	220401X	Mercury
	Green Lake	081801G	Mercury
	Greenwood Reservoir (Escanaba River)	080605B	Mercury
	Gull Lake	083005I	Mercury
	Gulliver Lake	081201J	Mercury
	Gun Lake	083004I	Pathogen
	Gun River	083004M	Biota
	Hamilton Lake	080303A	Mercury
	Hamlin Lake	082002B	Mercury
	Heron Lake	210414F	Mercury
	Higgins Lake	082713A	Mercury
	Hubbard Lake	211001C	Mercury
	Intermediate Lake	081503H	Mercury
	Jordan Lake	082811A	Mercury
	Kalamazoo River	083001D	Mercury

TMDL Year	Waterbody Name	WBID#	TMDL Parameter(s)
2011 cont.	Klinger Lake	083215B	Mercury
	Lake Ann	081701A	Mercury
	Lake Bellaire	081503G	Mercury
	Lake Besser (Ninth Street Pond)	211002C	Mercury
	Lake Emily	080315Y	Mercury
	Lake Gogebic	221204F	Mercury
	Lake Independence	220702X	Mercury
	Lake Margrethe	081907X	Mercury
	Lake Mitchell	082712Z	Mercury
	Lake Nepessing	210413J	Mercury
	Lake Orion	061406A	Mercury
	Lake Ponemah	210417H	Mercury
	Lake St. Clair	061000A	Mercury
	Lakeville Lake	061407A	Mercury
	Langford Lake	221205A	Mercury
	Lily Lake	082708C	Mercury
	Lincoln Lake	082807Z	Mercury
	Littlefield Lake	210424E	Mercury
	Long Lake	082807Y	Mercury
	Lower Trout Lake	061406E	Mercury
	Maceday Lake	061406F	Mercury
	Manistee Lake	081901A	Mercury
	Manistique River	081103I	Pathogen
	Manistique River and N Manistique Lake	081103B	Mercury
	Marion Lake	221208B	Mercury
	Marten Lake	220803C	Mercury
	Menominee River	080303C	Mercury
	Michigamme River and Impoundments	080307B	Mercury
	Milakokia Lake	081201A	Mercury
	Millecoquin Lake	081202O	Mercury
	Mona Lake	082701U	Mercury
	Moore's Park Impoundment (Grand River)	082815B	Mercury
	Mullett Lake	211305Y	Mercury
	Muskegon Lake and Muskegon River	082701B	Mercury
	Nawakwa Lake	220303B	Mercury
	Net River	080313A	Mercury
	Nettie Lake	211201B	Mercury
	Orchard Lake	061406G	Mercury
	Ottawa Lake	080318B	Mercury
	Otter Lake	220805A	Mercury
	Paint River Pond	080315C	Mercury
	Perch Lake	220804Z	Mercury
	Perch Lake	080308B	Mercury
	Pere Marquette R and Pere Marquette Lk	082101E	Mercury
	Pickerel Lake	211308A	Mercury
	Pike Lake	220301B	Mercury
	Pine Lake	081904K	Mercury

TMDL Year	Waterbody Name	WBID#	TMDL Parameter(s)
2011 cont.	Pine Lake	083004H	Mercury
	Pomeroy Lake	221402Z	Mercury
	Portage Lake	221001B	Mercury
	Portage Lake	082816Q	Mercury
	Rainbow Lake	082807K	Mercury
	Randall Lake	083216H	Mercury
	Red Cedar River	082818H	Pathogen
	Red Cedar River	082818H	Biota
	Reeds Lake	082806E	Mercury
	Rice Creek	083008A	Biota
	Rice Lake	221001A	Mercury
	Rifle River	210602A	Mercury
	River Raisin	061101H	Mercury
	River Rouge	061305H	Mercury
	Round Lake	080308D	Mercury
	Round Lake	080902B	Mercury
	Runkle Lake	080315B	Mercury
	Saginaw River	210401B	Mercury
	Sanford Lake (Tittabawassee River)	210426X	Mercury
	Schweitzer Reservoir (Escanaba River)	080605C	Mercury
	Second Sister Lake	061205C	Mercury
	Selkirk Lake	083002A	Mercury
	Shiawassee River	210415A	Mercury
	Siskiwit Lake (Isle Royale)	220101H	Mercury
	Six Mile Lake	221101I	Mercury
	South Lake	061205M	Mercury
	St. Clair River	061502A	Mercury
	St. Joseph River	083204I	Mercury
	St. Marys River	211701E	Mercury
	Stony Creek Impoundment	061407B	Mercury
	Sunset Lake	080317X	Mercury
	Terry Lake	061405K	Mercury
	Thousand Island Lake	221205G	Mercury
	Todd Lake	082706B	Mercury
	Torch Lake	221001A	Mercury
	Torch Lake	081501E	Mercury
	Unnamed Lake	080309A	Mercury
	Unnamed Lake	061203E	Mercury
	Vandercook Lake	082816R	Mercury
	Vermilac Lake (Worm Lake)	220803B	Mercury
	Victoria Reservoir (W. Br. Ontonagon R)	221203D	Mercury
	Wabasis Lake	082807M	Mercury
	Waiska River, S. Br. of the E. Br.	211801B	Biota
	Walled Lake	061304D	Mercury
	Wamplers Lake	061101R	Mercury
	Wannadoga Creek	083006M	Biota
	West Branch Lakes	081104A	Mercury
	White Lake	082301A	Mercury

TMDL Year	Waterbody Name	WBID#	TMDL Parameter(s)
2012	Green Bay	080000C	PCB, Dioxin, Mercury
	Lake Erie	060000A	PCB, Dioxin
	Lake Huron	210000A	PCB, Chlordane, Dioxin
	Lake Michigan	080000A	PCB, Mercury, Chlordane, Dioxin
	Lake Michigan	080000B	PCB, Mercury, Chlordane, Dioxin, DDT
	Lake Superior	220000A	PCB, Mercury, Chlordane, Dioxin
	Little Bay de Noc	080801B	PCB, Mercury
	Saginaw Bay	210400A	PCB, Mercury, Dioxin
	St. Marys River	211701A	Pathogen

ATTACHMENT 4

Total Maximum Daily Load (TMDL) Waterbodies Delisted Since 2000 List

Mercury (6 waterbodies)

Sediment Cleanup: Unnamed Tributary to Wolf Creek (210422A).

Fish Consumption Advisory Change: Cisco Lake (221205D), Ford/Belleville Lake (061203N), Kent Lake (061206R), Portage Lake (081802B), and Portage Lake (061205J).

PCB (5 waterbodies): All sediment cleanups - Black River (082102B), Manistique River (081103F), Pine River (DDT) (210421A), Saginaw River (210402Z), Willow Run Creek (061203A); (plus Newburgh Lake on the Middle Branch Rouge River).

Pathogens (3 waterbodies): Geddes Pond (Huron River) and Crapaud Creek TMDLs submitted and approved by the United States Environmental Protection Agency (USEPA). One waterbody (Little Black Creek, 08270T) was delisted because the source of pathogens (pump station) was corrected.

Nutrient (1 waterbody): Lake Allegan TMDL submitted and approved by the USEPA.

Biota (22 waterbodies):

A. Coldwater River TMDL submitted and approved by the USEPA.

B. Nine waterbodies delisted due to nonpoint source actions:

Augusta Creek (083003A): Animal access eliminated. Stream quality improved and now meets water quality standards (WQS).

Chippewa Creek (082201H): Cattle access eliminated. Stream quality now meets WQS.

Christiana Creek (083206I): Animal access eliminated. Stream quality now meets WQS.

Duck Creek (082811D): Stream recovered from past manure losses, now meets WQS.

Prairie River (083214F): Stream recovering from illegal dredging and erosion, now meets WQS.

Rocky River (083209F): Cattle access eliminated. Stream now meets WQS.

St. Joseph River/Beebe Creek (083218F): Siltation/sedimentation problem appears to be corrected. Stream now meets WQS.

Whetstone Creek (220601D): Excessive storm water runoff addressed with detention ponds. Stream now meets WQS.

Wolf Creek (082818E): Nuisance nutrient expression problem appears to have been addressed.

C. Six waterbodies delisted due to point source (PS) actions:

Ball Creek (082804F): PS discharge from National Fruit Products has ceased. Stream now meets WQS.

Chart Creek, E. Br. (083003D): Illegal discharge from Murco stopped. Stream now meets WQS.

Eau Claire Extension Drain (083204D): Three of four PS discharges now in compliance. Biota now acceptable.

Hart Drain (210415D): Illegal discharges of Alachlor stopped. Stream now meets WQS.

Mann Creek (083001L): PS discharge from Michigan Fruit Cannery and causing WQS violations.

Red Cedar River (082818F): Stream recovered from previous PS discharges (Cu problem), and now meets WQS.

D. Five waterbodies delisted due to miscellaneous reasons:

Clam River (082711E): Nutrient expression (Cladophora) not present.

Paw Paw, S. Br. (083207J): Stream dredged; no longer appropriate to list for biota. Now a highly modified stream.

Pine Creek (083202I): Stream dredged; no longer appropriate to list for biota. Now a highly modified stream.

Silver Creek (083205E): Stream dredged; no longer appropriate to list for biota. Now a highly modified stream.

Ten Hagen Creek (082901S): Acceptable biological communities found in recent survey. Stream meets WQS.

ATTACHMENT 5

TMDLs Submitted to the USEPA Since 1996.

Waterbody: **ALLEGAN LAKE**
(KALAMAZOO RIVER IMP.) WBID#: **083005G**
County: ALLEGAN HUC: 4050003 Size: 1587 A
Location: Located west of Allegan in Alley and Allegan Twps.
Problem: **Nutrient enrichment, nuisance algal growths.**
TMDL Type: Phosphorus TMDL Submittal Date: 03/2001 Approval Date: 04/2001

Waterbody: **BEAR CREEK**
WBID#: **082805E**
County: KENT HUC: 4050006 Size: 3 M
Location: From W. Cannonsburg Road u/s to cattle access site 100 yards u/s of
Warren Townsend Park.
Problem: **Threatened Biota.**
TMDL Type: Sediment TMDL Submittal Date: 08/1997 Approval Date: Inform. TMDL

Waterbody: **BRIGHTON LAKE**
WBID#: **061205O**
County: LIVINGSTON HUC: 4090005 Size: 158 A
Location: An impoundment on south Ore Creek just d/s from the City of Brighton.
Problem: **Nutrient enrichment.**
TMDL Type: Phosphorus TMDL Submittal Date: 12/1999 Approval Date: 02/2000

Waterbody: **COLDWATER RIVER**
WBID#: **210424B**
County: ISABELLA HUC: 4080202 Size: 3 M
Location: Vernon Rd. Crossing u/s to Outlet Lake (Littlefield Lake area).
Problem: **Biological community threatened.**
TMDL Type: Biota TMDL Submittal Date: 06/2001 Approval Date: 09/2001

Waterbody: **CRAPAUD CREEK** WBID#: **061409E**
County: MACOMB HUC: 4090002 Size: 2 M
Location: Downtown New Baltimore at Hamer Street u/s.
Problem: **Pathogens (Rule 100).**
TMDL Type: E. coli TMDL Submittal Date: 02/2002 Approval Date: 03/2002

Waterbody: **FORD LAKE/BELLEVILLE LAKE (HURON RIVER IMP.)** WBID#: **061203N**
County: WAYNE HUC: 4090005 Size: 2245 A
Location: Vicinity of Belleville.
Problem: **Nutrient enrichment, nuisance algal growths.**
TMDL Type: Phosphorus TMDL Submittal Date: 09/1996 Approval Date: 03/2000

Waterbody: **GEDDES POND (HURON RIVER)** WBID# **061203B**
County: WASHTENAW HUC: 4090005 Size: 2 M
Location: Geddes Pond Dam u/s to Geddes Avenue (vicinity of Ann Arbor).

Problem: **Pathogens (Rule 100).**

TMDL Type: E. coli TMDL

Submittal Date: 08/2001

Approval Date: 09/2001

Waterbody: **KENT LAKE** WBID#: **061206D**
County: OAKLAND HUC: 4090005 Size: 1000 A
Location: An impoundment on the main stem of the Huron River. Its u/s boundary is
Dawson Rd. and d/s is the Kent Lake spillway at I-96.
Problem: **Nutrient enrichment.**
TMDL Type: Phosphorus TMDL Submittal Date: 12/1999 Approval Date: 03/2000

Waterbody: **LAKE MACATAWA (WATERSHED)** WBID#: **082901D**
County: OTTAWA HUC: 4050002 Size: 1780 A
Location: Vicinity of Holland (Park and Holland Twps.)
Problem: **Nutrient enrichment, nuisance algal blooms.**
TMDL Type: Phosphorus TMDL Submittal Date: 01/1999 Approval Date: 04/2000

Waterbody: **ORE LAKE**
WBID#: **061205S**
County: LIVINGSTON HUC: 4090005 Size: 192 A
Location: D/s of Brighton Lake
Problem: **Nutrient enrichment.**
TMDL Type: Phosphorus TMDL Submittal Date: 12/1999 Approval Date: 02/2000

Waterbody: **STRAWBERRY LAKE**
WBID#: **061205U**
County: LIVINGSTON HUC: 4090005 Size: 247 A
Location: A lake on the Huron River just d/s of M-36 in Livingston County.
Problem: **Nutrient enrichment.**
TMDL Type: Phosphorus TMDL Submittal Date: 12/1999 Approval Date: 08/2000

Waterbody: **SYCAMORE CREEK**
(WATERSHED)# WBID#: **082817D**
County: INGHAM HUC: 4050004 Size: 87 M
Location: Grand River confluence u/s to headwaters and to include Mud Creek,
Talmadge Creek, Willow Creek and Havens Drain.
Problem: **WQS exceedances for D.O.**
TMDL Type: D.O. TMDL Submittal Date: 05/1997 Approval Date:
Inform. TMDL

